



America

CERTIFICATE

No. B 15 05 57396 329

Holder of Certificate: **XP Power LLC.**



15641 Red Hill Avenue, Suite 100
Tustin CA 92780
USA

Production Facility(ies): 62803, 83459

Certification Mark:



Product: **Switching power supply unit
(Switching Power Supply)**

Model(s): **VFT150PSxx
(where xx can be number 05, 12, 15, 24 or 48
to indicate the output voltage)**

Parameters:

Rated Input Voltage:	100-240 V AC
Rated Frequency:	50/60 Hz
Rated Input Current:	2.5 A
Rated Output Ratings:	See attachment
Protection Class:	Class I at end use
Maximum temperature, ambient :	50°C for maximum output power, 70°C for half maximum output power.
Elevation for use:	0-3048 m above sea level
See attachment for additional information.	

Tested according to: EN 60950-1:2006/A2:2013

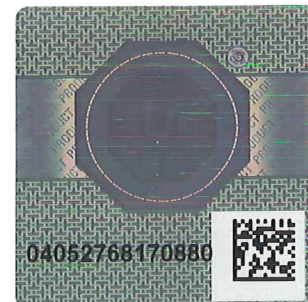
The product was tested on a voluntary basis and complies with the essential requirements. The certification mark shown above can be affixed on the product. It is not permitted to alter the certification mark in any way. In addition the certification holder must not transfer the certificate to third parties. See also notes overleaf.

Test report no.: 095-72105462-000

Valid until: 2019-06-20

Date, 2015-06-02

Page 1 of 2





America

ATTACHMENT TO CERTIFICATE NO. B 15 05 57396 329 FOR XP POWER LLC

POWER SUPPLY

Power supply models VFT150PSxx series are component type power supplies intended for use in IT equipment. They are power supplies intended for building-in Class I end product.

Approved models and Rated Outputs:

Model Number	Voltage (VDC)	OUTPUT RATING					
		Current (A)					
		Convection cooling			Force air cooling		
		Tma=50°C	Tma=65°C	Tma=70°C	Tma=50°C	Tma=65°C	Tma=70°C
VFT150PS05	5	16	8	--	24	12	--
VFT150PS12	12	8.3	--	4.15	12.50	--	6.25
VFT150PS15	15	6.7	3.35	--	10	5	--
VFT150PS24	24	4.2	--	2.1	6.25	--	3.125
VFT150PS48	48	2.1	--	1.05	3.13	--	1.565

Conditions of Acceptability:

When installing the equipment, all requirements of the standards and the manufacturer's specifications must be met.

The models require:

- A suitable electrical and fire enclosure must be provided in the end use equipment.
- Proper earthing at end product is requirement.
- Connection and disconnection from Mains requirements shall be evaluated at end product.
- Model VFT150PS15 has output at hazardous energy level (240VA), additional accessibility evaluation shall be performed at end use.
- End product shall provide an external forced air cooling, 10 CFM minimum, located by T2, distance form T2 is 10 cm. the air flow direction is from fan to T2.

Rpt. Ref. No.: 095-72105462-000


Page 2 of 2

2015-06-02