



America

CERTIFICATE

No. B 15 06 57396 336

Holder of Certificate: **XP Power LLC.**

15641 Red Hill Avenue, Suite 100
Tustin CA 92780
USA

Production
Facility(ies):

72220, 71712

Certification Mark:



Product:

**Power supply
(Switching Power Supply)**

Model(s):

EPL225PSxx
(where the "xx" can be any number between 12 to 48 indicating main output voltage, may also be provided with suffix "SF" for single fuse option.)

Parameters:

Rated Input Voltage:	100-240 VAC,
Rated Frequency:	50/60 Hz
Rated Input Current:	3 A max
Rated Output Ratings:	See attachment for output ratings
Protection Class:	Class I at end use
Elevation for use:	0-5000 m above sea level
Temperature, Maximum Ambient:	50°C at maximum output ratings 70°C at half maximum output ratings

Tested according to: EN 60950-1:2006/A2:2013

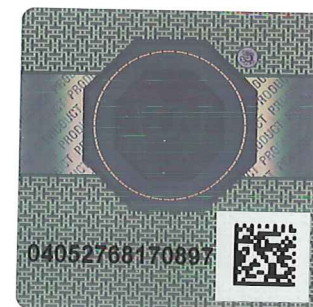
The product was tested on a voluntary basis and complies with the essential requirements. The certification mark shown above can be affixed on the product. It is not permitted to alter the certification mark in any way. In addition the certification holder must not transfer the certificate to third parties. See also notes overleaf.

Test report no.: 095-72106057-000

Valid until: 2019-06-20

Date, 2015-06-11

Page 1 of 2





America

ATTACHMENT TO CERTIFICATE NO. B 15 06 57396 336 FOR XP POWER LLC

POWER SUPPLY

Approved models and Rated Outputs:

Model Number	DC OUTPUT RATING						
	Convection Cooling			Forced Air Cooling			
	Voltage (V1) (VDC)	Maximum Current (A)	Maximum Power (W)	Voltage (V1) (VDC)	Maximum Current (A)	Maximum Power (W)	(V2) (Vdc/A)
EPL225PS12	12	12.5	150	12	18.75	225	12Vdc/0.5A
EPL225PS15	15	10	150	15	15	225	12Vdc/0.5A
EPL225PS18	18	8.33	150	18	12.5	225	12Vdc/0.5A
EPL225PS24	24	9.38	150	24	9.38	225	12Vdc/0.5A
EPL225PS28	28	5.36	150	28	8.04	225	12Vdc/0.5A
EPL225PS36	36	4.16	150	36	6.25	225	12Vdc/0.5A
EPL225PS48	48	3.1	150	48	4.69	225	12Vdc/0.5A

Conditions of Acceptability:

The models require:

- A suitable electrical and fire enclosure must be provided in the end use equipment.
- Proper bonding to the end-product main protective earthing termination shall be provided at end product.
- Input Connector (CON1) N terminal must be connected to the end-product supply neutral.
- Temperature, touch current and Dielectric Strength testing shall be considered in the end system
- Heatsinks are floating and considered live. They should not be accessible in the end-product.
- The equipment is provided with a fuse in both the Line and Neutral of the primary circuit. The need for a marking warning service person of the hazards associated with neutral fusing shall be considered in the end-product.
- When installed in end product, the clearance and creepage distance between the hazardous parts and accessible parts shall meet the standard(s) requirements.

Rpt. Ref. No.: 095-72106057-000

Page 2 of 2

2015-06-11