



America

CERTIFICATE

No. B 15 08 57396 347

Holder of Certificate: XP Power LLC.



15641 Red Hill Avenue, Suite 100
Tustin CA 92780
USA

Production Facility(ies):

59319, 71712, 89850, 59061

Certification Mark:



Product:

Power supply

Model(s):

EMH250PS Series, EMH350PS Series

Parameters:

Rated Input Voltage:	100-240 VAC
Rated Input Current:	3.8 A (EMH250PS Series), 4.8 A (EMH350PS Series)
Rated Input frequency:	50/60 Hz
Rated Output Ratings:	See attachment
Protection Class:	Class I at end use.
Temperature, Ambient:	50°C with maximum output power, 70°C with half maximum output power.
Elevation for use:	0-3048 m above sea level.
See attachment for further details.	

Tested according to: EN 60950-1:2006/A2:2013

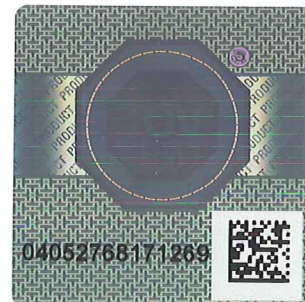
The product was tested on a voluntary basis and complies with the essential requirements. The certification mark shown above can be affixed on the product. It is not permitted to alter the certification mark in any way. In addition the certification holder must not transfer the certificate to third parties. See also notes overleaf.

Test report no.: 095-72109199116-000

Valid until: 2019-06-20

Date, 2015-09-03

Page 1 of 3





America

ATTACHMENT TO CERTIFICATE NO. B 15 08 57396 347 FOR XP POWER LLC.

POWER SUPPLY

Models covered in this report are component type AC to DC power supplies intended for use in IT equipment. They are power supplies for building-in.

Approved Models

Model Number	MAIN OUTPUT RATING		
	Voltage (VDC)	Maximum Current (A)	Maximum Power (W)
EMH250PS12	10.1-13.5	21	250
EMH250PS15	13.6-17	16.7	250
EMH250PS18	17.1-21	14	250
EMH250PS24	21.1-26	10.5	250
EMH250PS28	26.1-31	9.0	250
EMH250PS33	31.1-33	7.6	250
EMH250PS36	33.1-42	6.9	250
EMH250PS48	42.1-54	5.2	250
EMH350PS12	10.1-13.5	29.2	350
EMH350PS15	13.6-17	23.3	350
EMH350PS18	17.1-21	19.5	350
EMH350PS24	21.1-26	14.6	350
EMH350PS28	26.1-31	12.5	350
EMH350PS33	31.1-33	10.6	350
EMH350PS36	33.1-42	9.8	350
EMH350PS48	42.1-54	7.3	350
EMH350PS12-01 XB0118	10.1-13.5	29.2	350
Stand-by output for all models: 5Vdc/2A or 12Vdc/0.8 A; Fan output for all models: 12Vdc/0.6A.			

Model number can be optionally followed by:

YY= 00-99, denotes non-safety related functions;
Then optionally followed by

“-SF”, denotes single pole fusing (default: double fusing);

Model number can optionally provided with suffix:

“-TF” or “-VF” : top fan and cover;

“-S”: models provided with input screw terminals;

“D”: integral O-ring diode located in the secondary.

EMH350PS12-01 XB0118 is identical to model EMH350PS12 except for model number.



America

ATTACHMENT TO CERTIFICATE NO. B 15 08 57396 347 FOR XP POWER LLC.

Conditions of Acceptability:

When installing the equipment, all requirements of the standards and the manufacturer's specifications must be met.

The models require:

- A suitable electrical and fire enclosure must be provided in the end use equipment.
- Proper bonding to the end-product main protective earthing terminal is required at end use.
- When installed in end product, the clearance and creepage distance between the related circuitry of the power supply and accessible parts shall meet the standard(s) requirements. Hi-pot test, touch current test and ground bond test shall be conducted at end product.
- All secondary output circuits are at hazardous energy level, additional compliance at end use.
- The proper warning to service persons should be marked on the end product when the power supply has a fuse in the neutral of the primary circuit.
- Some models have output at hazardous energy level, additional evaluation and compliance at end product.
- The maximum continuous power supply output (Watts) relied on forced air cooling 12 cfm fan applied Inward from the Input side from 3 in. (7.62 cm) or provided with Top Fan option.
- Fans: The fan provided in this sub-assembly is not intended for operator access, accessibility shall be evaluated in the end product.