



America

CERTIFICATE

No. B 16 01 57396 400

Holder of Certificate: **XP Power LLC.**



15641 Red Hill Avenue, Suite 100
Tustin CA 92780
USA

Production
Facility(ies):

77041, 61661

Certification Mark:



Product:

Power supply

Model(s):

ECL30xxyy
(where xx can be UD or UT to indicate the dual or triple outputs, yy can be 01, 02 or 03 for different output combinations, can be optionally followed by P, T, E, S or SD for different mounting method or terminal type.)

Parameters:

Rated Input Voltage:	100-240 VAC
Rated Input Current:	0.8 A
Rated input frequency:	50/60 Hz
DC Output Ratings:	See attachment
Protection Class:	Class I or Class II at end use.
Temperature, Ambient:	50°C with maximum output power, 70°C with half maximum output power.
Elevation for use:	0-3048 m above sea level.
See attachment for further information.	

Tested according to: EN 60950-1:2006/A2:2013

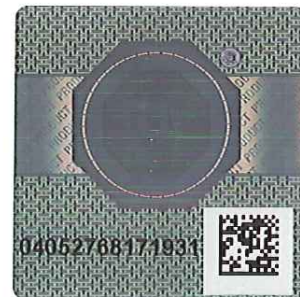
The product was tested on a voluntary basis and complies with the essential requirements. The certification mark shown above can be affixed on the product. It is not permitted to alter the certification mark in any way. In addition the certification holder must not transfer the certificate to third parties. See also notes overleaf.

Test report no.: 095-72110365109-000

Valid until: 2019-06-20

Date, 2016-01-14

Page 1 of 2





America

ATTACHMENT TO CERTIFICATE NO. B 16 01 57396 400 FOR XP POWER LLC

POWER SUPPLY

Approved models and Rated Outputs:

Model Number	Output 1		Output 2		Output 3		Output Power (W)
	Voltage (VDC)	Current (A)	Voltage (VDC)	Current (A)	Voltage (VDC)	Current (A)	
ECL30UD01	12	1.3	-12	1.3	--	--	30
ECL30UD02	15	1.0	-15	1.0	--	--	30
ECL30UD03	5	3.0	12	1.3	--	--	30
ECL30UT02	5	3.0	12	0.63	-12	0.63	30
ECL30UT03	5	3.0	15	0.5	-15	0.5	30

Model No. suffix:

- P: PCB mount, open frame model, I/O pins
- T: PCB mount, open frame model, I/O connectors
- E: plastic enclosure with epoxy, I/O pins
- S: plastic enclosure with epoxy, I/O terminal blocks,
- SD: plastic enclosure with epoxy, I/O terminal blocks, DIN rail clip provided.

Conditions of Acceptability:

When installing the equipment, all requirements of the standards and the manufacturer's specifications must be met.

The models require:

- A suitable electrical and fire enclosure must be provided in the end use equipment.
- Proper bonding to the end-product main protective earthing terminal is required if installed in Class I end product.
- When installed in end product, the clearance and creepage distance between the hazardous circuit and accessible parts shall meet the standard(s) requirements. Hi-pot test, touch current test and ground bond test (Class I end product) shall be conducted at end product.
- Terminal block type ELK508 series suitable for solid/stranded copper wiring only, 30-14 AWG, 4.5 lbs.-in. torque. Terminal block type ETB33 series suitable for solid/stranded copper wiring only, 22-14 AWG, 3.48 lbs.-in. torque.