



America

CERTIFICATE

No. B 15 02 57396 321

Holder of Certificate: **XP Power LLC.**



15641 Red Hill Avenue, Suite 100
Tustin CA 92780
USA

**Production
Facility(ies):**

59319, 71712, 89850

Certification Mark:



Product:

**Power supply
(Switching power supply)**

Model(s):

CHD250PSxxxy
(where "xx" can be any number between 12 to 48 indicating main output voltage, "yy" can be SF indicating Single Fuse, may also be provided with additional suffixes "-S", "-C", "-L", and/or "A".)

Parameters:

Rated Input Voltage:	100-240 VAC,
Rated Frequency:	50/60 Hz
Rated Input Current:	3.1 A max
Rated Output Ratings:	See attachment for output ratings
Protection Class:	Class I at end use
Elevation for use:	0-5000 m above sea level
Tamb:	50°C at maximum output ratings 70°C at half maximum output ratings

Tested according to: EN 60950-1/A2:2013

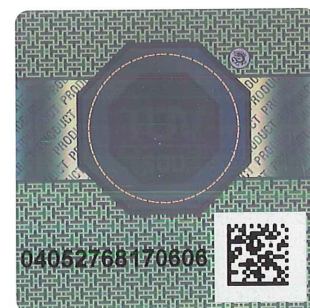
The product was tested on a voluntary basis and complies with the essential requirements. The certification mark shown above can be affixed on the product. It is not permitted to alter the certification mark in any way. In addition the certification holder must not transfer the certificate to third parties. See also notes overleaf.

Test report no.: 095-72102949-000

Valid until: 2019-06-20

Date, 2015-02-27

Page 1 of 2





America

ATTACHMENT TO CERTIFICATE NO. B 15 02 57396 321 FOR XP POWER LLC

SWITCHING POWER SUPPLY

Approved models and Rated Outputs:

Model Number	OUTPUT RATING		
	Voltage (VDC)	Max Current (A)	Max Output power (W)
CHD250PS12	10.1 to 13.5	20.8	250
CHD250PS15	13.6 to 17	16.7	250
CHD250PS18	17.1 to 21	13.9	250
CHD250PS24	21.1 to 26	10.4	250
CHD250PS28	26.1 to 31	8.93	250
CHD250PS33	31.1 to 33	7.58	250
CHD250PS36	33.1 to 42	6.94	250
CHD250PS48	42.1 to 54	5.2	250

Suffix:

SF: single fuse provided in the line side of the primary.

-C: unit provided with cover;

-S: unit provided with screw terminal;

-L: unit provided with input leads;

-A: unit provided with 5V Stand-by output rated 5Vdc, 0.5A.

Conditions of Acceptability:

The models require:

- A suitable electrical and fire enclosure must be provided in the end use equipment.
- Proper bonding to the end-product main protective earthing termination shall be provided at end product.
- Input Connector (CON1) N terminal must be connected to the end-product supply neutral.
- Heatsinks are floating and considered live. They should not be accessible in the end-product.
- The equipment is provided with a fuse in both the Line and Neutral of the primary circuit. The need for a marking warning service person of the hazards associated with neutral fusing shall be considered in the end-product.
- When installed in end product, the clearance and creepage distance between the hazardous parts and accessible parts shall meet the standard(s) requirements. Hi-pot test, touch current test and ground bond test (for Class I end product) shall be conducted at end use.

Rpt. Ref. No.: 095-72102949-000

[Signature]
Page 2 of 2

2015-02-27