



America

CERTIFICATE

No. B 15 06 57396 332

Holder of Certificate: **XP Power LLC.**



15641 Red Hill Avenue, Suite 100
Tustin CA 92780
USA

Production
Facility(ies):

59319, 71712, 89850

Certification Mark:



Product:

Power supply

Model(s):

CCL400PSxxyy
(where xx can be number between 12 to 48 indicating
main output voltage, yy can be SF for single fuse or blank,
may also be provided with additional suffixes "-C", "-L")

Parameters:

Rated Input Voltage:	100-240 VAC
Rated Input Current:	5 A max
Rated input frequency:	50/60 Hz
DC Output Ratings:	See attachment
Protection Class:	Class I at end use.
Ta:	50°C with maximum output power, 70°C with half maximum output power.
Elevation for use:	0-5000 m above sea level.

See attachment for Conditions of Acceptability.

Tested according to: EN 60601-1:2006/A12:2014

The product was tested on a voluntary basis and complies with the essential requirements. The certification mark shown above can be affixed on the product. It is not permitted to alter the certification mark in any way. In addition the certification holder must not transfer the certificate to third parties. See also notes overleaf.

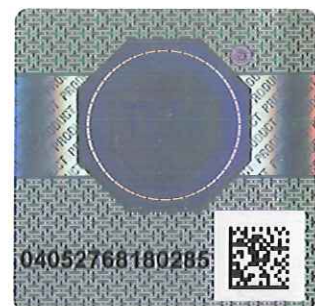
Test report no.: 095-72104231-100

Valid until: 2020-06-03

Date, 2015-06-08

Page 1 of 3

None





America

ATTACHMENT TO CERTIFICATE NO. B 15 06 57396 332 FOR XP POWER LLC

POWER SUPPLY

Approved models and Rated Outputs:

Model Number	OUTPUT RATING		
	Voltage (VDC)	Maximum Current (A)	Maximum Power (W)
CCL400PS12	10.1-13.5	33.3	400
CCL400PS15	13.6-17	26.7	400
CCL400PS18	17.1-21	22.2	400
CCL400PS24	21.1-26	16.7	400
CCL400PS28	26.1-31	14.3	400
CCL400PS33	31.1-33	12.1	400
CCL400PS36	33.1-42	11.1	400
CCL400PS48	42.1-54	8.3	400

Stand-by output for all models: 5Vdc/0.5A.

Suffix: "-C": unit provided with cover; "-L": unit provided with input leads.

Model	Convictional Cooling		Convictional Cooling With Cover		Convictional Cooling With Cover and Heatsink		Convictional Cooling With Heatsink
	Max Output @50°C	Max Output @70°C	Max Output @50°C	Max Output @70°C	Max Output @50°C	Max Output @70°C	Max Output @70°C
CCL400PS12	402.5W; 33.33A, 0.5A	176.25W; 14.6A, 0.25A	322.5W; 26.67A, 0.5A	161.25W; 13.33A, 0.25A	402.5W; 33.33A, 0.5A	201.25W; 16.67A, 0.25A	402.5W; 33.33A, 0.5A
CCL400PS15	402.5W; 26.66A, 0.5A	176.25W; 11.68A, 0.25A	322.5W; 21.34A, 0.5A	161.25W; 10.66A, 0.25A	402.5W; 26.66A, 0.5A	201.25W; 13.34A, 0.25A	402.5W; 26.66A, 0.5A
CCL400PS18	402.5W; 22.22A, 0.5A	176.25W; 9.73A, 0.25A	322.5W; 17.78A, 0.5A	161.25W; 8.89A, 0.25A	402.5W; 22.22A, 0.5A	201.25W; 11.11A, 0.25A	402.5W; 22.22A, 0.5A
CCL400PS24	402.5W; 16.67A, 0.5A	176.25W; 7.3A, 0.25A	322.5W; 13.33A, 0.5A	161.25W; 6.67A, 0.25A	402.5W; 16.67A, 0.5A	201.25W; 8.33A, 0.25A	402.5W; 16.67A, 0.5A
CCL400PS28	402.5W; 14.28A, 0.5A	176.25W; 6.26A, 0.25A	322.5W; 11.43A, 0.5A	161.25W; 5.71A, 0.25A	402.5W; 14.28A, 0.5A	201.25W; 7.14A, 0.25A	402.5W; 14.28A, 0.5A
CCL400PS33	402.5W; 12.12A, 0.5A	176.25W; 5.31A, 0.25A	322.5W; 9.69A, 0.5A	161.25W; 4.84A, 0.25A	402.5W; 12.12A, 0.5A	201.25W; 6.06A, 0.25A	402.5W; 12.12A, 0.5A
CCL400PS36	402.5W; 11.11A, 0.5A	176.25W; 4.86A, 0.25A	322.5W; 8.89A, 0.5A	161.25A; 4.44A, 0.25A	402.5W; 11.11A, 0.5A	201.25W; 5.55A, 0.25A	402.5W; 11.11A, 0.5A
CCL400PS48	402.5W; 8.33A, 0.5A	176.25W; 3.65A, 0.25A	322.5W; 6.67A, 0.5A	161.25W; 3.33A, 0.25A	402.5W; 8.33A, 0.5A	201.25W; 4.17A, 0.25A	402.5W; 8.33A, 0.5A



America

ATTACHMENT TO CERTIFICATE NO. B 15 06 57396 332 FOR XP POWER LLC

Conditions of Acceptability:

When installing the equipment, all requirements of the standards and the manufacturer's specifications must be met.

The models require:

- A suitable electrical and fire enclosure must be provided in the end use equipment.
- Models provided with suffix SF only provided with one line side fuse. Consideration should be made in the end-use product to determine the need of double pole fusing.
- This power supply was evaluated with Two MOPP between Primary and Secondary; One MOPP primary and Earth.
- This power supply has been evaluated as a continuous operation, ordinary equipment and has not been evaluated for use in the presence of a flammable anesthetic mixture with air, oxygen, or nitrous oxide. The output circuits have not been evaluated for direct patient connection (Type B, BF or CF).
- The output connectors are not acceptable for field connections; they are only intended for connection to mating connectors of the end-use equipment.
- Repeat of dielectric voltage withstand and leakage current testing and consideration of non-frequency weighted leakage current test shall be considered in the end product application.
- Proper bonding to the end-product main protective earthing termination is required. Protective earthing testing shall be conducted in the end product application.
- Scope of Power Supply evaluation defers the following clauses to the be determined as part of the end product: Clause 7.5 (Safety Signs), Clause 7.9 (Accompanying Documents), Clause 9 (ME Hazard), Clause 10 (Radiation), Clause 14 (PEMS), Clause 16 (ME Systems) and Clause 17 (Electromagnetic Compatibility).