



America

CERTIFICATE

No. B 15 04 57396 326

Holder of Certificate: XP Power LLC.



15641 Red Hill Avenue, Suite 100
Tustin CA 92780
USA

Production Facility(ies):

61661, 77041

Certification Mark:



Product:

Power supply

Model(s):

ASB110PSxx

(where xx can be 12 to 48 designating the output voltage, can be optionally followed by "-HK" for heatsink)

Parameters:

Rated Input Voltage:	100-240 V AC
Rated Frequency:	50/60 Hz
Rated Input Current:	1.5-0.5 A
Rated output:	See attachment for output information
Protection Class:	Class I at end use
Temperature, Ambient:	50°C at full load; 70°C at 50% full load
Elevation for use:	0-3048 m
Others:	See attachment for conditions of acceptability

Tested according to: EN 60950-1:2006/A2:2013

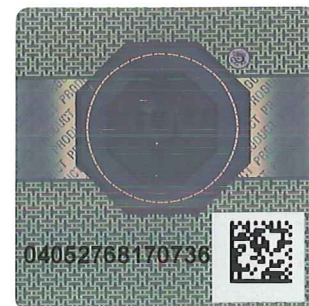
The product was tested on a voluntary basis and complies with the essential requirements. The certification mark shown above can be affixed on the product. It is not permitted to alter the certification mark in any way. In addition the certification holder must not transfer the certificate to third parties. See also notes overleaf.

Test report no.: SI1411699-200

Valid until: 2019-06-20

Date, 2015-04-20

Page 1 of 2





America

ATTACHMENT TO CERTIFICATE NO. B 15 02 57396 326 FOR XP POWER LLC

POWER SUPPLY

Approved models and rated output:

Model Number	Output			Maximum Power (W) @ 50°C	Maximum Power (W) @ 70°C
	Voltage (Vdc)	Max Current (A) @ 50°C	Max Current (A) @ 70°C		
ASB110PS12	12	9.17	4.58	110	55
ASB110PS15	15	7.33	3.67		
ASB110PS24	24	4.58	2.29		
ASB110PS28	28	3.93	1.97		
ASB110PS36	36	3.06	1.53		
ASB110PS48	48	2.29	1.15		

Conditions of Acceptability:

When installing the equipment, all requirements of the standards and the manufacturer's specifications must be met.

The models require:

- A suitable electrical and fire enclosure must be provided in the end use equipment.
- The following input terminals/connectors must be connected to the end-product supply neutral: AC/N.
- The end-product Electric Strength Test is to be based upon a maximum working voltage of: Primary- Earthed Dead Metal: 240 Vrms, 340 Vpk, Primary-SELV: 240 Vrms, 396 Vpk.
- The following secondary output circuits are Limited Current Circuits: Load side of CY3.
- The power supply terminals and/or connectors are: Suitable for factory wiring only.
- The maximum investigated branch circuit rating is: 20 A.
- The following components require special consideration during end-product Thermal (Heating) tests due to the indicated maximum temperature measurements during component-level testing: T1 (110°C).
- The equipment is suitable for direct connection to: AC mains supply.
- Repeat of heating and dielectric test to be considered as part of end product.