



America

CERTIFICATE

No. Z1A 15 10 57396 357

Holder of Certificate: XP Power LLC.



15641 Red Hill Avenue, Suite 100
Tustin CA 92780
USA

Factory(ies):

71712, 89850

Certification Mark:



Product:

Power supply

Model(s):

AHM100PS24-XD0112A , AHM100PSxx, AHM100PSxxC2
(where xx is number between 12-48 indicating output voltage, "C2" for Class II configuration; can be followed by "-A" or "-6" or "-6A" or "-8" or "-8A" for different input connector type and optional clamp retention)
Please see attachment for detailed model information.

Parameters:

| | |
|-----------------------|--|
| Rated Input Voltage: | 100-240 VAC, |
| Rated Frequency: | 50/60 Hz |
| Rated Input Current: | 1.2 A |
| Rated Output Ratings: | See attachment for output ratings |
| Protection Class: | Class I or Class II |
| Elevation for use: | 0-3048 m above sea level |
| Temperature, Ambient: | 40°C with maximum output power 60°C with 60% maximum output power |

Tested according to:

EN 60950-1:2006/A2:2013
AfPS GS 2014:01 PAK

The product meets the safety and health requirements of the German Product Safety Act section 20 to 22 ProdSG. The certification marks shown above can be affixed on the product. It is not permitted to alter the certification marks in any way. In addition the certificate holder must not transfer the certificate to third parties. This certificate is valid until the listed date, unless it is cancelled earlier. See also notes overleaf.

Test report no.:

095-72109199140-000

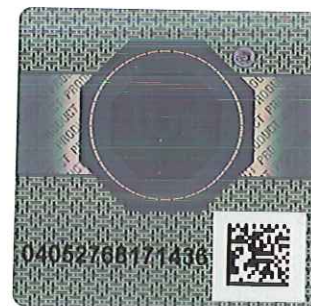
Valid until:

2019-06-20

Date, 2015-10-28

(Adrian Rabago)

Page 1 of 2





America

ATTACHMENT TO CERTIFICATE NO. Z1A 15 10 57396 357 FOR XP POWER LLC

POWER SUPPLY

Approved models and Rated Outputs:

| Model Number | OUTPUT RATING | | |
|--------------------------|----------------|------------------------|----------------------|
| | Voltage (VDC) | Maximum Current (A) | Maximum Power (W) |
| AHM100PS12, AHM100PS12C2 | 10.1-13.5 | 8.33 | 100 |
| AHM100PS15, AHM100PS15C2 | 13.5-17.0 | 6.67 | 100 |
| AHM100PS19, AHM100PS19C2 | 17.1-21.0 | 5.26 | 100 |
| AHM100PS24, AHM100PS24C2 | 21.0-26.0 | 4.16 | 100 |
| AHM100PS28, AHM100PS28C2 | 26.1-31.0 | 3.57 | 100 |
| AHM100PS33, AHM100PS33C2 | 31.1-33.0 | 3.03 | 100 |
| AHM100PS36, AHM100PS36C2 | 33.1-42.0 | 2.78 | 100 |
| AHM100PS48, AHM100PS48C2 | 42.1-54.0 | 2.08 | 100 |

Note: Model AHM100PS24-XD0112A is identical as model AHM100PS24.

Models with "C2" (Class II models) have 2 pin Class II appliance inlet. Models without "C2" (Class I models) have 3 pin Class I appliance inlet.

Model number can be followed with suffix as below:

Blank: C14 input connector (Class I model) or C18 input connector (Class II model);

"-A": C14 input connector with optional clamp retention(Class I model);

"-6": C6 input connector (Class I model);

"-6A": C6 input connector with optional clamp retention (Class I model);

"-8": C8 input connector (Class II model);

"-8A": C8 input connector with optional clamp retention (Class II model).