



America

CERTIFICATE

No. B 14 11 57396 288

Holder of Certificate: **XP Power LLC.**



1241 East Dyer Road, Suite 150
Santa Ana CA 92705
USA

Production
Facility(ies):

59319, 71712

Certification Mark:



Product:

Power supply
(Power Supply)

Model(s):

AHM100PSxxyy-zz (where xx is any number between 12-48 designating output voltage and yy can be blank or "C2", -zz can be "-A", "-6", "-6A", "-8", "-8A", or blank),
AHM100PS24 XD0112A

Parameters:

Rated Input Voltage: 100-240 VAC,
Rated Frequency: 50/60 Hz
Rated Input Current: 1.2 A
Rated Output Ratings: See attachment
Protection Class: Class I or Class II
Elevation for use: 0-3000 m above sea level
Temperature, Ambient: 40°C with maximum output power
60°C with 60% maximum output power.

See attachment for further information.

Tested according to: EN 60601-1/A1:2013

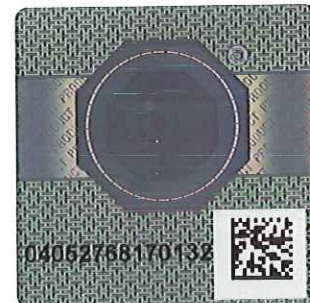
The product was tested on a voluntary basis and complies with the essential requirements. The certification mark shown above can be affixed on the product. It is not permitted to alter the certification mark in any way. In addition the certification holder must not transfer the certificate to third parties. See also notes overleaf.

Test report no.: SI1409800-128

Valid until: 2019-11-21

Date, 2014-11-26

Page 1 of 2





America

ATTACHMENT TO CERTIFICATE NO. B 14 11 57396 288 FOR XP POWER

POWER SUPPLY

Models covered are external power supplies intended to be used with Medical Electrical Equipment.

Approved models and Rated Outputs:

Model Number	OUTPUT RATING	
	Voltage (VDC)	Maximum Current (A)
AHM100PS12, AHM100PS12C2	10.1-13.5	8.33
AHM100PS15, AHM100PS15C2	13.5-17.0	6.67
AHM100PS19, AHM100PS19C2	17.1-21.0	5.26
AHM100PS24, AHM100PS24C2	21.0-26.0	4.16
AHM100PS28, AHM100PS28C2	26.1-31.0	3.57
AHM100PS33, AHM100PS33C2	31.1-33.0	3.03
AHM100PS36, AHM100PS36C2	33.1-42.0	2.78
AHM100PS48, AHM100PS48C2	42.1-54.0	2.08

Note: Model AHM100PS24-XD0112A is identical to model AHM100PS24 except that AHM100PS24 XD0112A can use an alternate input connector..

Model number can be followed with suffix as below:

"-A": C14 style input connector with optional IEC cable retention;

"-6": C6 style input connector;

"-6A": C6 style input connector with optional IEC cable retention;

"-8": C8 style input connector;

"-8A": C8 style input connector with optional IEC cable retention;

Blank: C14 style input connector (for Class I construction) or C 18 style input connector (for Class II construction)

Conditions of Acceptability:

- This power supply was evaluated with Two MOPP between Primary and Secondary; One MOPP primary and Earth/Secondary Reference Conductor; and One MOPP between Secondary and Earth/Secondary Reference Conductor.
- This power supply has been evaluated as a continuous operation, ordinary equipment and has not been evaluated for use in the presence of a flammable anesthetic mixture with air, oxygen, or nitrous oxide. The output circuits have not been evaluated for direct patient connection (Type B, BF or CF).
- The component shall be provided in compliance with the Marking (clause 7) and Separation (clause 8) requirements of the end use application.
- Repeating leakage current testing should be considered in the end product application.
- The available voltage for the secondary outputs does not exceed 25 Vac or 60 Vdc, under normal and single fault conditions.
- The output connectors are not acceptable for field connections; they are only intended for connection to mating connectors of the end-use machine.
- The need for Marking Durability and Marking Legibility Testing to be considered as part of the end product installation.
- Power cord suitable for the application to be provided as part of the end product evaluation.
- The product was not investigated to the following standards or clauses:: Biocompatibility (ISO 10993- 1), Clause 14, Programmable Electronic Systems, Electromagnetic Compatibility (IEC 60601-1-2).

Rpt. Ref. No.: SI1409800-128

[Signature]
Page 2 of 2

2014-11-26