



Product Service

CERTIFICATE

No. Z1A 16 01 65969 177

Holder of Certificate: **XP Power Limited**
401 Commonwealth Drive,
Haw Par Technocentre, Lobby B, #02-02 149598
SINGAPORE

Certification Mark:



Product: **Switching power supply unit
(Switching Power Adaptor)**

Tested according to: EN 60950-1:2006/A2:2013
AfPS GS 2014:01 PAK 3.1

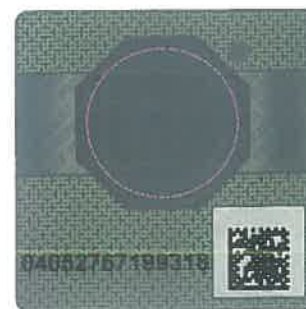
The product meets the safety and health requirements of the German Product Safety Act section 20 to 22 ProdSG. The certification marks shown above can be affixed on the product. It is not permitted to alter the certification marks in any way. In addition the certificate holder must not transfer the certificate to third parties. This certificate is valid until the listed date, unless it is cancelled earlier. See also notes overleaf.

Test report no.: 68210910105A

Valid until: 2021-01-07

Date, 2016-01-28 (Rickyet Wang)

Page 1 of 3





Product Service

CERTIFICATE
No. Z1A 16 01 65969 177

Model(s): AFM120PS series
(see page 3 for details of model number.)

Brand Name: XP

Parameters:

Rated Input :	100-240VAC, 50-60Hz, or 50/60Hz, or 50Hz or 60Hz, 2.0A
Rated Output :	See page 3 for details
Construction :	Movable
Protection Class :	I
Degree of Protection :	IP20

Factory(ies): 49020



Model	Output Voltage (V)	Output Current (A)	Max. Output Power (W)
AFM120PS12C6 AFM120PS12	12.0	0.01-8.33	100
AFM120PS135C6 AFM120PS135	13.5	0.01-7.40	100
AFM120PS138C6 AFM120PS138	13.8	0.01-7.25	100
AFM120PS15C6 AFM120PS15	15.0	0.01-6.66	100
AFM120PS16C6 AFM120PS16	16.0	0.01-6.25	100
AFM120PS17C6 AFM120PS17	17.0	0.01-5.88	100
AFM120PS18C6 AFM120PS18	18.0	0.01-5.55	100
AFM120PS19C6 AFM120PS19	19.0	0.01-5.26	100
AFM120PS20C6 AFM120PS20	20.0	0.01-5.00	100
AFM120PS22C6 AFM120PS22	22.0	0.01-4.54	100
AFM120PS24C6 AFM120PS24	24.0	0.01-5.00	120
AFM120PS26C6 AFM120PS26	26.0	0.01-4.62	120
AFM120PS28C6 AFM120PS28	28.0	0.01-4.28	120
AFM120PS295C6 AFM120PS295	29.5	0.01-4.06	120
AFM120PS30C6 AFM120PS30	30.0	0.01-4.00	120
AFM120PS33C6 AFM120PS33	33.0	0.01-3.63	120
AFM120PS36C6 AFM120PS36	36.0	0.01-3.33	120
AFM120PS48C6 AFM120PS48	48.0	0.01-2.50	120