

10W Convection cooled

DC-DC converters

The JTF10 series is housed in a DIP24 metal case. Featuring a 4:1 input voltage range of 9 to 36VDC or 18 to 75VDC with both single and dual outputs, singles have 3.3, 5, 12 or 15VDC with duals having ± 5 , ± 12 or ± 15 VDC. Single output models are adjustable $\pm 10\%$ with a trim resistor.

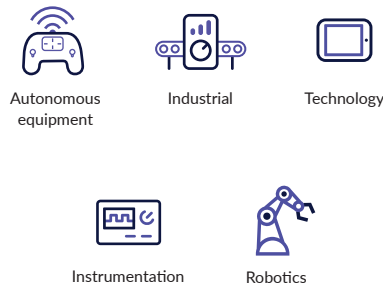
The JTF10 provides 1.6kVDC isolation between input and output. Remote on/off is standard. Operating temperature range is from -40°C to $+85^{\circ}\text{C}$, with full power to $+60^{\circ}\text{C}$.



Features

- ▶ Regulated single & dual outputs
- ▶ 4:1 input range
- ▶ Single outputs 3.3 to 15VDC
- ▶ Dual outputs ± 5.0 to ± 15 VDC
- ▶ DIP24 metal case
- ▶ 1.6kVDC isolation
- ▶ Remote On/Off
- ▶ -40°C to $+85^{\circ}\text{C}$ operating temperature
- ▶ Full power to $+60^{\circ}\text{C}$
- ▶ 3 year warranty

Applications



Dimensions

31.75 x 20.32 x 10.16mm (1.25" x 0.8" x 0.4")

More resources

Click the link or scan the code

[→ xppower.com](https://www.xppower.com)



Models & ratings

Model number	Input voltage	Output voltage	Output current	Efficiency	Input current ⁽¹⁾		Maximum capacitive load
					No load	Full load	
JTF1024S3V3	9-36VDC	3.3VDC	2.7 A	85%	15mA	573mA	1330 μF
JTF1024S05		5.0VDC	2.0 A	87%	15mA	581mA	1330 μF
JTF1024S12		12.0VDC	0.833 A	88%	15mA	574mA	288 μF
JTF1024S15		15.0VDC	0.667 A	88%	15mA	574mA	200 μF
JTF1024D05		± 5.0 VDC	± 1.0 A	85%	15mA	595mA	$\pm 900\mu\text{F}$
JTF1024D12		± 12.0 VDC	± 0.417 A	87%	15mA	574mA	$\pm 133\mu\text{F}$
JTF1024D15		± 15.0 VDC	± 0.33 A	87%	15mA	574mA	$\pm 90\mu\text{F}$

Continued on page 2

Notes:

1. Input current measured at nominal 24V and 48V input.
2. When one output is set to 100% load & the other varies between 25% & 100% load.
3. Measured with 1 μF ceramic capacitor across output rails.

Models & ratings

Model number	Input voltage	Output voltage	Output current	Efficiency	Input current ⁽¹⁾		Maximum capacitive load
					No load	Full load	
JTF1048S3V3	18-75VDC	3.3VDC	2.7A	84%	15mA	225 mA	1330 μ F
JTF1048S05		5.1VDC	2.0A	87%	15mA	240 mA	1330 μ F
JTF1048S12		12.0VDC	0.833A	87%	15mA	240 mA	288 μ F
JTF1048S15		15.0VDC	0.667A	87%	15mA	240 mA	200 μ F
JTF1048D05		\pm 5.0VDC	\pm 1.0A	85%	15mA	250 mA	\pm 900 μ F
JTF1048D12		\pm 12.0VDC	\pm 0.417A	88%	15mA	245 mA	\pm 133 μ F
JTF1048D15		\pm 15.0VDC	\pm 0.33A	88%	15mA	240 mA	\pm 90 μ F

Notes:

1. Input current measured at nominal 24V and 48V input.
2. When one output is set to 100% load & the other varies between 25% & 100% load.
3. Measured with 1 μ F ceramic capacitor across output rails.

General

Characteristic	Minimum	Typical	Maximum	Units	Notes & conditions
Efficiency	See models & ratings table				
Isolation: input to output	1600			VDC	
Isolation: input to case	1600			VDC	
Isolation: output to case	1600			VDC	
Isolation capacitance		1500		pF	
Switching frequency		270		kHz	
Power density		409.67 (25.0)		W/cm ³ (W/in ³)	
Mean time between failure		>1		Mhrs	MIL-HDBK-217F, +25°C GB

Input

Characteristic	Minimum	Typical	Maximum	Units	Notes & conditions
Input voltage range	9		36	VDC	24VDC nominal
	18		75		48VDC nominal
Input current	See models & ratings table				
Input filter	Pi network				
Input reflected ripple current		20		mA	12 μ H inductor and 47 μ F capacitor, 5Hz to 20MHz
Input surge		50		VDC	24VDC models (for 1s)
		100			48VDC models (for 1s)

Output

Characteristic	Minimum	Typical	Maximum	Units	Notes & conditions
Output voltage	See models & ratings table				
Minimum load	0			%	No minimum load required
Initial set accuracy		±1.2		%	
Line regulation			±0.2	%	Single output
			±0.5		Dual outputs
Load regulation			±0.5	%	Single output
			±1		Dual outputs
Cross regulation		±5		%	Dual outputs
Transient response			<3	%	Deviation, recovery to within 1% in <250µs for a 25% load change
Start up time		20		ms	
Ripple & noise		85		mV pk-pk	20MHz bandwidth
Short circuit protection	Trip & restart (hiccup mode), auto recovery				
Temperature coefficient		±0.02		%/°C	
Overload protection		170		%	Full load
Remote on/off	On = 3 to 12VDC or open circuit				
	Off = (<1.2VDC) or short circuit pin 1,2 & 3				
Overvoltage protection		3.9		VDC	3.3VDC models
		6.2			5VDC models
		15			12VDC models
		18			15VDC models
		±6.2			±5VDC models
		±15			±12VDC models
	±18		±15VDC models		
Maximum capacitive load	See models and ratings table				

Environmental

Characteristic	Minimum	Typical	Maximum	Units	Notes & conditions
Operating temperature	-40		+100	°C	Derate from 100% load at +60°C to no load at +100°C, see derating curve
Storage temperature	-40		+125	°C	
Case temperature			+105	°C	
Cooling	Natural cooled				
Operating humidity			90	%	RH, non condensing

Safety approvals

Safety agency	Standard	Notes & conditions
UL	UL60950-1 & UL62368-1	
CE	Meets all applicable directives	
UKCA	Meets all applicable legislation	

Emissions - EMC

Phenomenon	Standard	Test level	Notes & conditions
Conducted	EN55032	Class A	With external components
Radiated	EN55032	Class A	

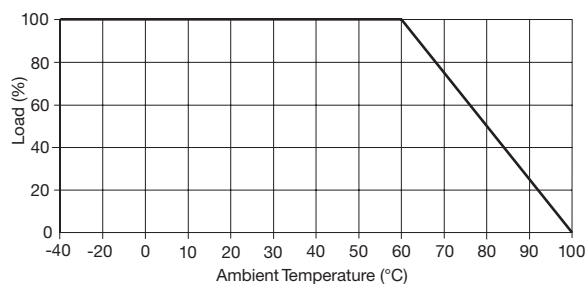
Immunity - EMC

Phenomenon	Standard	Test level	Criteria	Notes & conditions
ESD immunity	EN61000-4-2	Level 3	B	
Radiated immunity	EN61000-4-3	10V/m	A	
EFT/Burst	EN61000-4-4	3	B	External input capacitor required, 330 μ F/100V.
Surge	EN61000-4-5	2	B	External input capacitor required, 330 μ F/100V.
Conducted immunity	EN61000-4-6	10Vrms	A	External input capacitor required, 330 μ F/100V.
Magnetic fields	EN61000-4-8	1A/m	A	

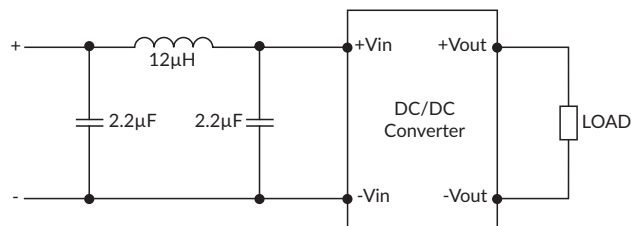
Application notes

Derating curve

12VDC input



Input filter



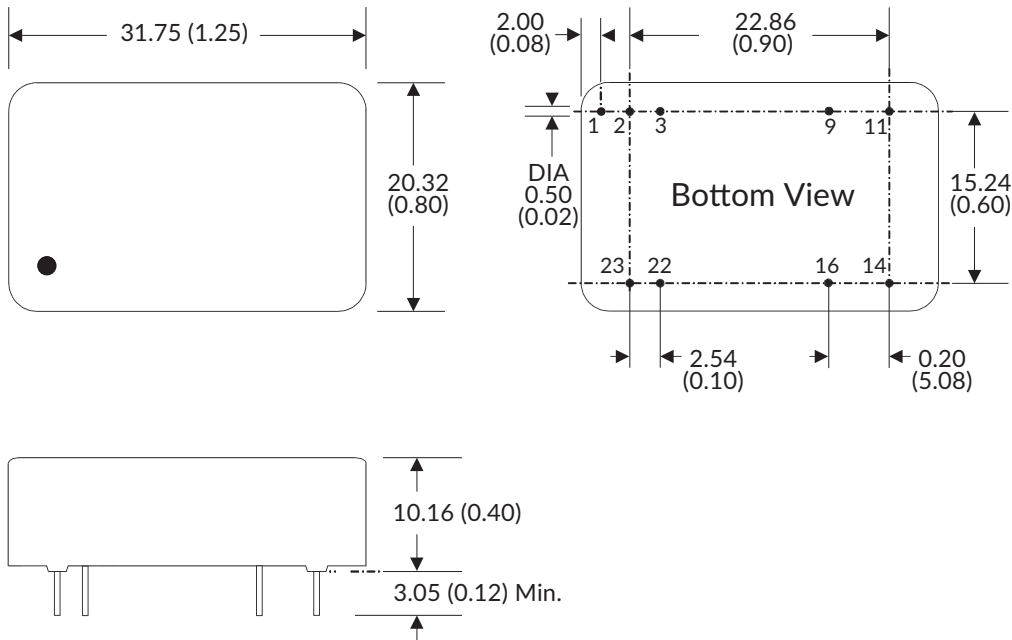
Remote on/off

Standard ROF logic is positive

Output On: 3 to 12VDC or open circuit

Output Off: <1.2VDC or short circuit pins 1, 2 & 3

Mechanical details



Pin connections		
Pin	Single	Dual
1	Remote On/Off	Remote On/Off
2	-Vin	-Vin
3	-Vin	-Vin
9	No Pin	Common
11	Not Connected	-Vout
14	+Vout	+Vout
16	-Vout	Common
22	+Vin	+Vin
23	+Vin	+Vin

Notes:

- All dimensions are in inches (mm)
- Weight: 18g (0.04lb), 15W:20g (0.04)
- Pin diameter: 0.5 ± 0.05 (0.02 ± 0.002)
- Pin pitch tolerance: ± 0.35 (± 0.014)
- Case tolerance: ± 0.5 (± 0.02)
- Package: 24 pin DIL nickel-coated copper.