



America

# CERTIFICATE

No. B 15 12 57396 381

**Holder of Certificate:** XP Power LLC.



15641 Red Hill Avenue, Suite 100  
Tustin CA 92780  
USA

**Production Facility(ies):**

71712, 59319, 89850, 59061

**Certification Mark:**



**Product:**

Power supply

**Model(s):**

MFA420PSxx, MFA350PSxx Series  
(where xx can be number 12, 24 or 48 to indicate main output voltage; can be optionally followed by -H, -S, -EF or -TF for different input connector or cooling fan configurations)

**Parameters:**

Rated Input Voltage:	100-240 V AC
Rated Input Current:	5.5 A (MFA420PSxx) 4.7 A (MFA350PSxx)
Rated input frequency:	50/60 Hz
Rated Output Ratings:	See attachment for details
Protection Class:	I at end use.
Temperature, Ambient:	50°C with maximum output power 70°C with 50% maximum output power
See Attachment for Additional Information	

**Tested according to:** EN 60950-1:2006/A2:2013

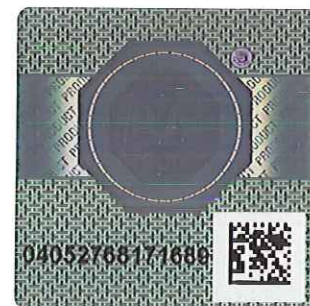
The product was tested on a voluntary basis and complies with the essential requirements. The certification mark shown above can be affixed on the product. It is not permitted to alter the certification mark in any way. In addition the certification holder must not transfer the certificate to third parties. See also notes overleaf.

**Test report no.:** 095-72109199109-000

**Valid until:** 2019-06-20

**Date,** 2015-12-16

Page 1 of 2





America

## ATTACHMENT TO CERTIFICATE NO. B 15 12 57396 381 FOR XP POWER LLC

### POWER SUPPLY

Power supply MFA420PSxx, MFA350PSxx Series are component power supplies intended for use in IT equipment. They are open frame power supplies intended for building-in Class I end product.

#### Approved models and Rated Outputs:

Model Number	OUTPUT	
	Voltage (V)	Current (A)
MFA420PS12	12	35
MFA420PS24	24	17.5
MFA420PS48	48	8.8
MFA350PS12	12	29
MFA350PS24	24	14.5
MFA350PS48	48	7.3

#### Remark:

All models are provided with a Fan Output (12Vdc, 1A) and a Standby Output (5Vdc, 0.5A).

#### Suffix:

- H: Provided with a hot swappable input appliance inlet and output connector,
- S: Provided with screw terminal input connector,
- EF: Provided with a cover with an End Fan,
- TF: Provided with a cover with a Top Fan.

The product is evaluated for use at altitude 0-3048 m above sea level.

When installing the equipment, all requirements of the standards and the manufacturer's specifications must be met.

#### The models require:

- A suitable fire enclosure must be provided in the end use equipment.
  - Equipment is intended for building in equipment that is either pluggable equipment Type B, or Permanently connected equipment; or has provisions for a permanently connected protective earthing conductor and is provided with instructions for the installation of that conductor per Clause 1.5.9.4
  - Proper bonding to the end-product main protective earthing terminal is required when the power supply is installed in the end product.
  - The following input terminals/connectors must be connected to the end-product supply neutral: Input Connector (J1) for all model series with the exception of Model Series with suffix -H, which is provided with an appliance inlet,
  - The maximum continuous power supply output relies on forced air cooling from: an external 13 CFM DC fan applied inward from the input side on units not provide with an internal fan.
- Output has energy level higher than 240 VA, additional compliance at end use.