

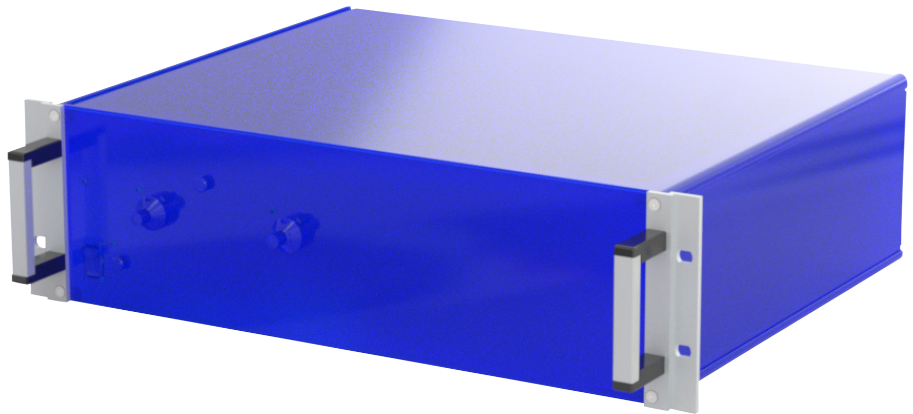
Rack adapters

We offer rack adapters for the installation of all XP Power tabletop models into 19" systems.
For inquiries, please consult [XP Power Sales](#) directly.

1. Two adapter plates

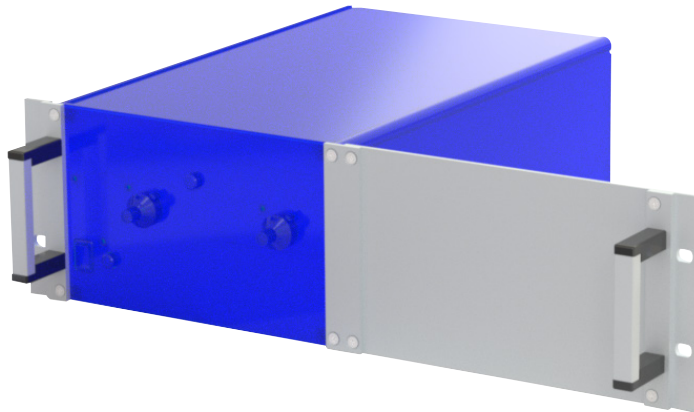
Available for devices with a width of 19" and the following heights:

- ▶ 3U
- ▶ 4U
- ▶ 5U
- ▶ 6U
- ▶ 7U
- ▶ 8U
- ▶ 9U



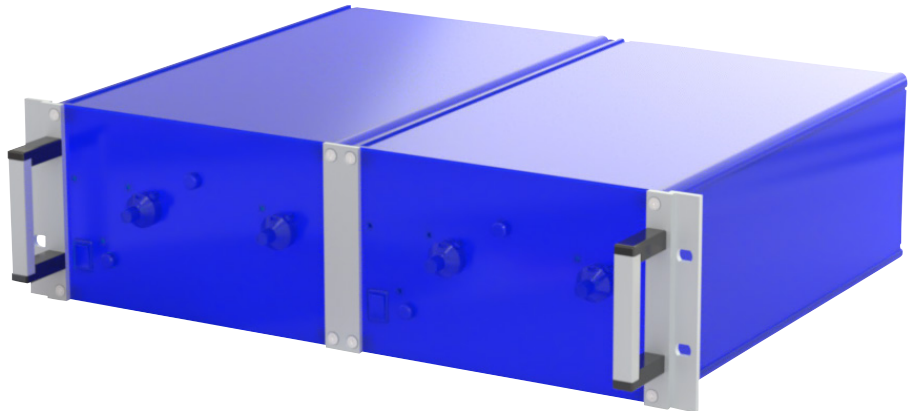
2. Two adapter plates & one blind plate

Suitable for mounting 1 device with a width of 1/2 19" and a height of 3U.



3. Two adapter plates & connecting plates

Suitable for mounting 2 devices with a width of 1/2 19" and a height of 3U.



Notes:

1. The options can also be reordered as spare parts.