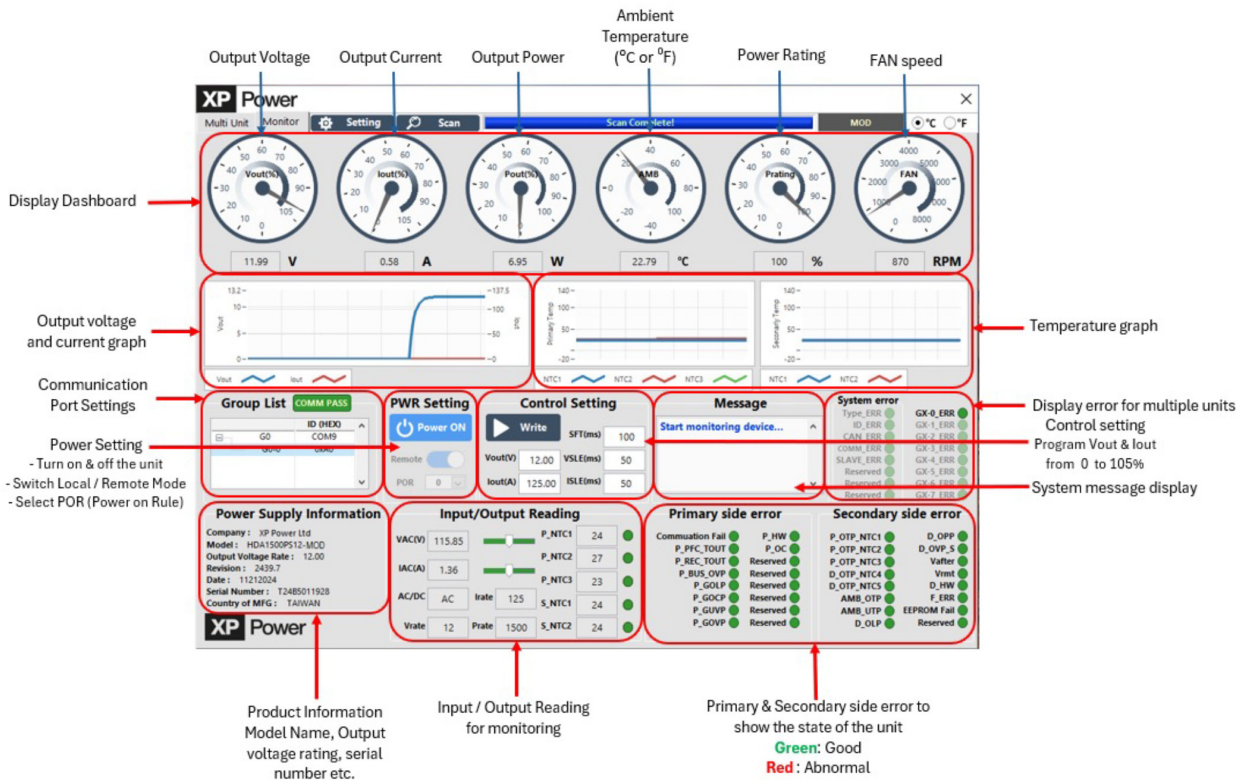
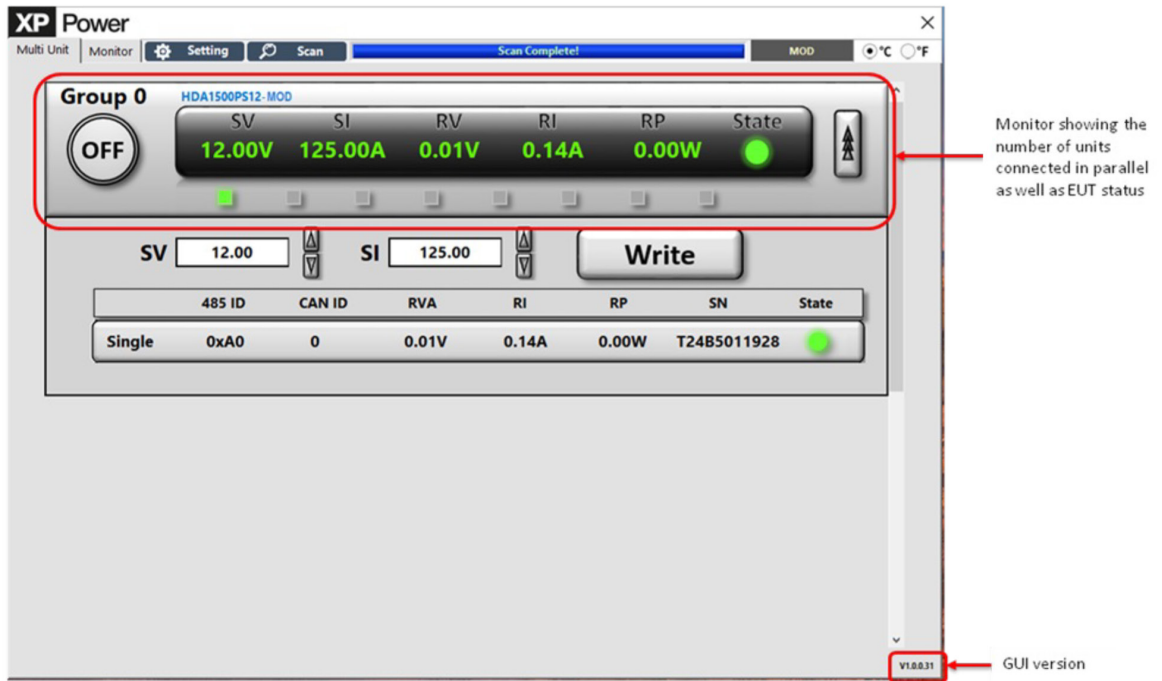


XP HDA Manager User Manual

Revision 1.0, 6th February 2025

XP Power HDA Manager - revision 1.0

► 1.0 - Introduction: HDA Manager Display



XP Power HDA Manager - revision 1.0

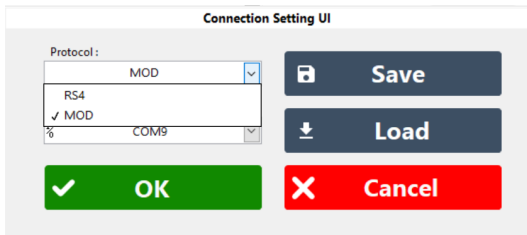
- ▶ 2.0 - Step to control HDA1500 series via HDA Manager (GUI)
- ▶ 2.1 - Turn ON power supply or devices.
- ▶ 2.2 - Launch HDA Manager.

(Contact XP Power to obtain HDA Manager Installation file).

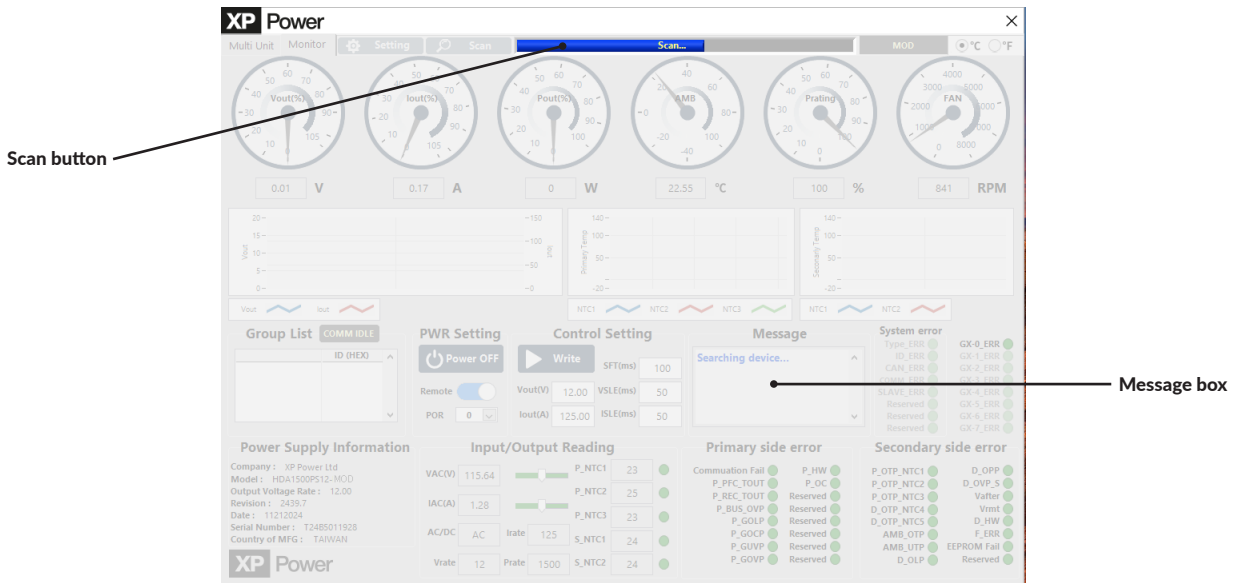


- ▶ 2.3 - Select suitable protocol. Then, click OK.

Example: HDA1500PS12-MOD, select MOD protocol.



- ▶ 2.4 - Click Scan button to connect the power supply or devices. The message box will show 'Searching device'.



XP Power HDA Manager - revision 1.0

- ▶ 2.4 continued - After scanning is complete, the message box will show "Start monitoring device". Power supply information will also be shown when the connection is successful.

The screenshot shows the XP Power HDA Manager software interface. At the top, there are navigation tabs for 'Multi Unit', 'Monitor', 'Setting', and 'Scan'. The 'Monitor' tab is active, displaying a 'Scan Complete!' status. The interface features several analog gauges for Vout(%) (0.01 V), Iout(%) (0.14 A), Pout(%) (0 W), AMB (22.73 °C), Prating (100 %), and FAN (841 RPM). Below these are three line graphs for Vout, Primary Temp, and Secondary Temp. A 'Group List' shows 'G0' with 'COM9' and '0xA0'. The 'PWR Setting' section has a 'Power OFF' button. The 'Control Setting' section shows 'Vout(V)' at 12.00 and 'Iout(A)' at 125.00. A 'Message' box displays 'Start monitoring device...'. The 'System error' section lists various error types like GX-0_ERR to GX-7_ERR. The 'Power Supply Information' section is highlighted with a red dashed box and labeled 'Power supply information'. It contains the following data:

- Company: XP Power Ltd
- Model: HDA1500PS12-MOD
- Output Voltage Rate: 12.00
- Revision: 2439.7
- Date: 11212024
- Serial Number: T2485011928
- Country of MFG: TAIWAN

The 'Input/Output Reading' section shows VAC(V) at 115.93, IAC(A) at 1.28, AC/DC at AC, Irate at 125, Vrate at 12, Prate at 1500, and various temperature readings for P_NTC1 through S_NTC2. The 'Primary side error' and 'Secondary side error' sections list various error types with green status indicators.

- ▶ 2.5 - Click Power ON to switch ON the power supply or devices

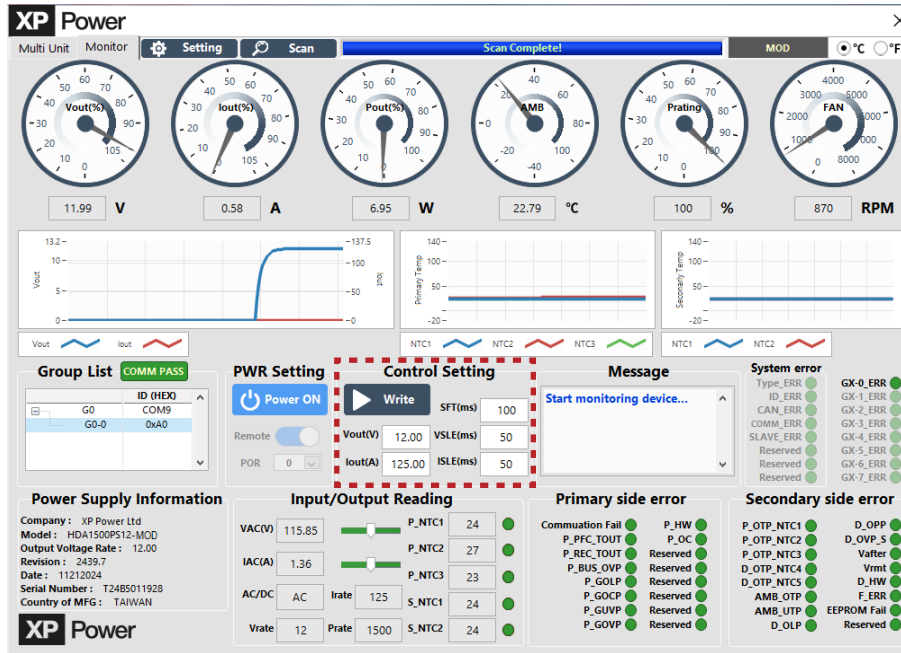
This screenshot shows the XP Power HDA Manager software interface after the power supply has been switched on. The 'PWR Setting' section now shows a 'Power ON' button. The 'Message' box still displays 'Start monitoring device...'. The 'Power Supply Information' section is highlighted with a red dashed box and labeled 'Power supply information'. It contains the following data:

- Company: XP Power Ltd
- Model: HDA1500PS12-MOD
- Output Voltage Rate: 12.00
- Revision: 2439.7
- Date: 11212024
- Serial Number: T2485011928
- Country of MFG: TAIWAN

The 'Input/Output Reading' section shows VAC(V) at 115.85, IAC(A) at 1.36, AC/DC at AC, Irate at 125, Vrate at 12, Prate at 1500, and various temperature readings for P_NTC1 through S_NTC2. The 'Primary side error' and 'Secondary side error' sections list various error types with green status indicators.

XP Power HDA Manager - revision 1.0

- ▶ 2.6 - Program Vout (V) and Iout (A) from 0 – 105% by changing the value at the control setting.



- ▶ 2.7 - Set the power on priority via local / remote at POR (Power on Rule) setting. Refer to communication protocol document for more information

