

XP Power HDA Ethernet Discoverer User Manual

Revision 1.0, 6th February 2025

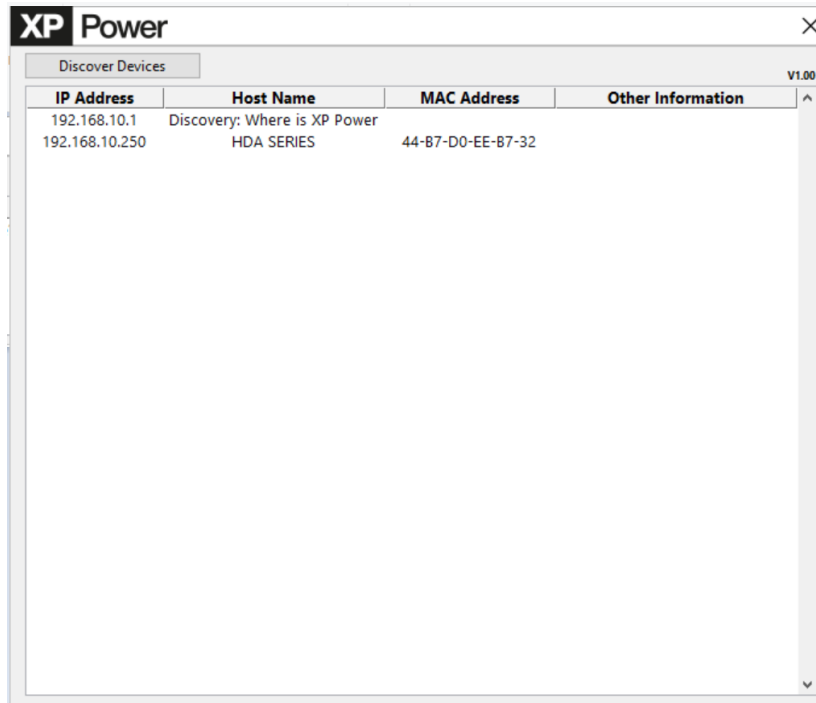
XP Power HDA Ethernet Discoverer - revision 1.0

- ▶ 1.0 Turn on power supply or devices.
- ▶ 2.0 Launch XP Power Ethernet Discoverer.

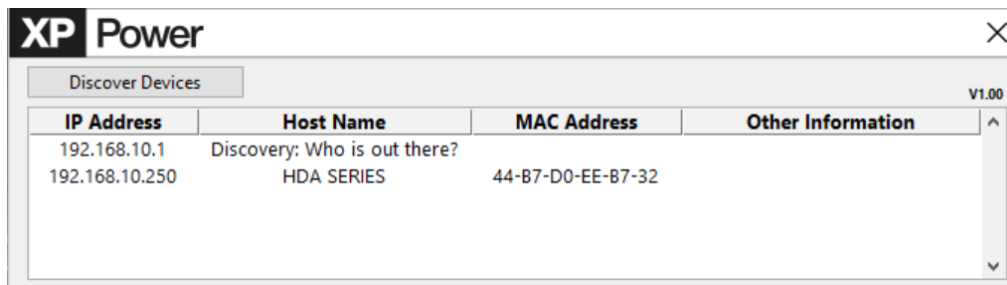
(Contact XP Power to obtain HDA Ethernet Discoverer installation file)



- ▶ 3.0 Press “Discover Devices” button to scan the power supply or devices.

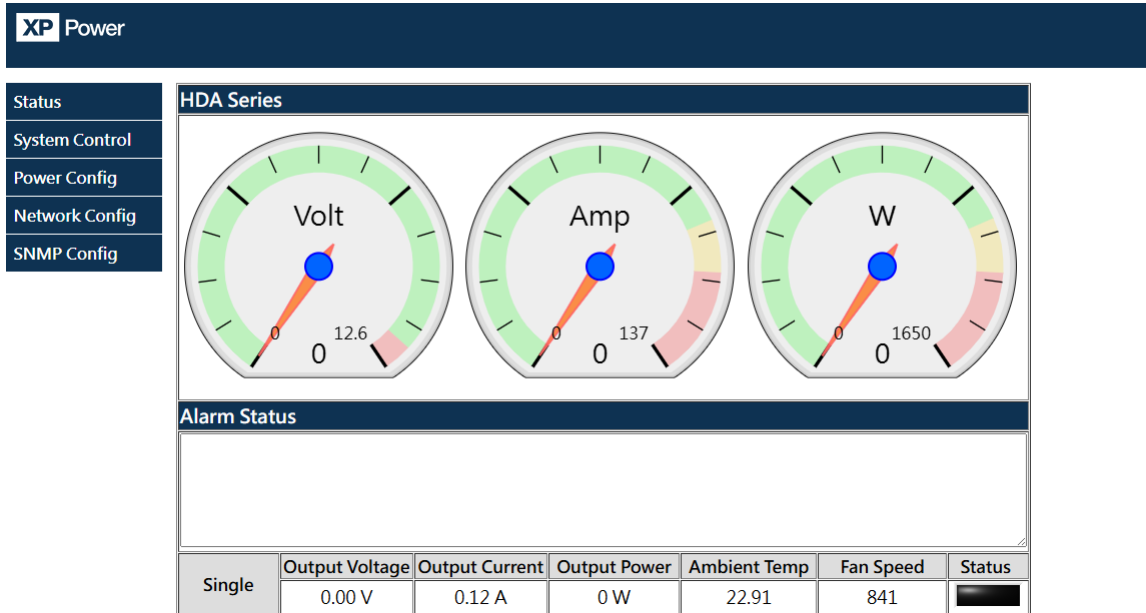


- ▶ 4.0 Select the IP address of the power supply or devices you wish to configure the settings.



XP Power HDA Ethernet Discoverer - revision 1.0

- ▶ 5.0 To configure the settings, select the "Network Config" Page.



- ▶ This requires the user to fill in the "username" & "password".

Sign in to access this site

Authorization required by http://192.168.10.250
Your connection to this site is not secure

Username

Password

- ▶ 5.1 The default user name and password is "admin" and "0000" respectively.
- ▶ 5.2 Password can be changed in the "Power Config" page.
- ▶ 5.3 Reset password using your Reset Button. The Reset Button is positioned behind a small hole on the front panel of -ETH interface board. Press the Reset Button and turn off the EUT for a few seconds and then turn on again.

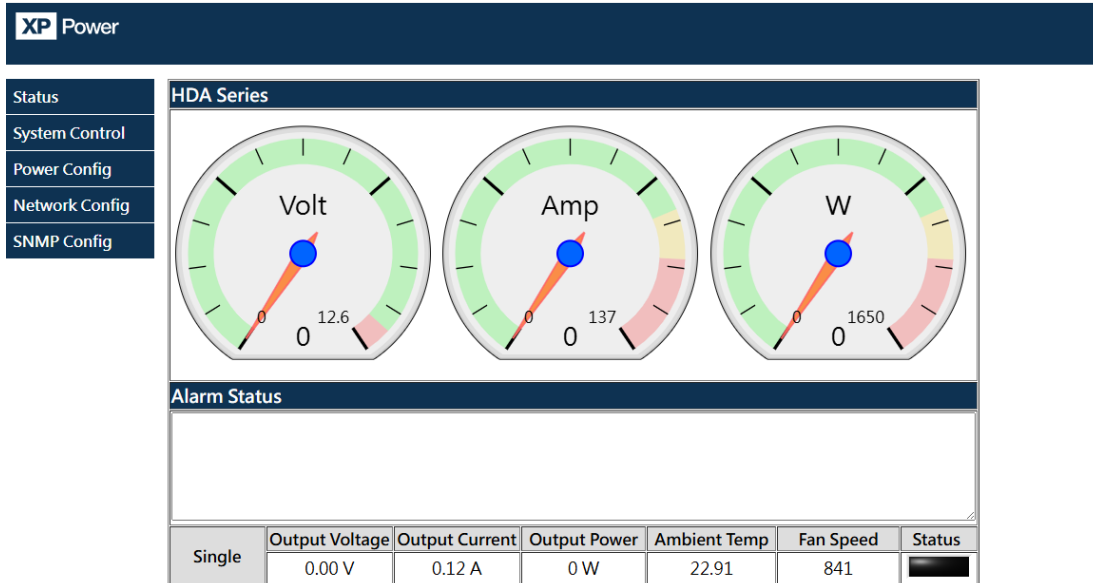
XP Power HDA Ethernet Discoverer - revision 1.0

- ▶ 5.4 In the “Network Config” page,
- ▶ 5.4.1 Rename the power supply host name according to its actual remote location.
- ▶ 5.4.2 Enter its IP address, gateway, subnet mask and port number to connect the power supply.
- ▶ 5.4.3 Press “Save & Reset” to save the settings

- ▶ 5.4.4 When the “Reboot in Progress” is complete, please click <http://HDA/> for the correct IP address to ensure successful connection before moving to “Status” page. Moving to “Status page” directly after reboot, will result to connection failure due to incorrect IP address detection.

XP Power HDA Ethernet Discoverer - revision 1.0

- ▶ 6.0 In the “Status” page, you will see the information about the power supply or devices. Here you will find an overview of the most important device data as well as the actual status display.



- ▶ 7.0 In the “Power Config” page, you will be able to change the settings of the power supply or devices. Make sure to press “Save Config” to save the settings.

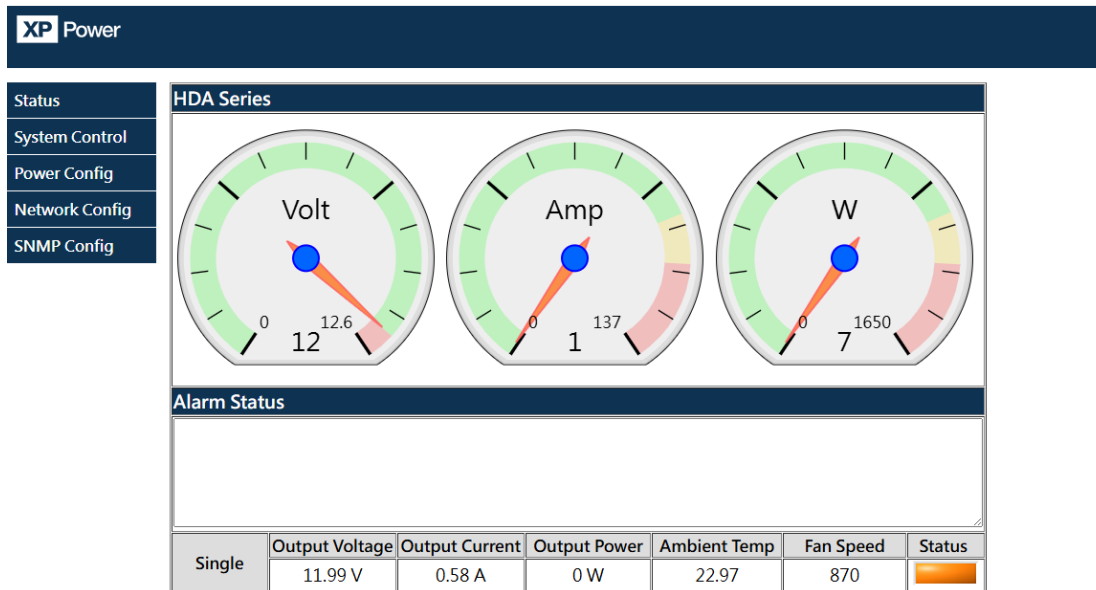
Output Voltage: V
 Output Current: A
 REMS:
 POR:
 SOK:
 Id:
 MODBUS Id:
 PMBUS Id:
 SFT :
 VSLE:
 ISLE:
 M/S Mode:
 CANID Mode:
 Password:

XP Power HDA Ethernet Discoverer - revision 1.0

- ▶ 8.0 In the “System Control” page, choose power on or off from the drop down list. Press “ACTIVE” to execute the selected operation of the power supply or devices.

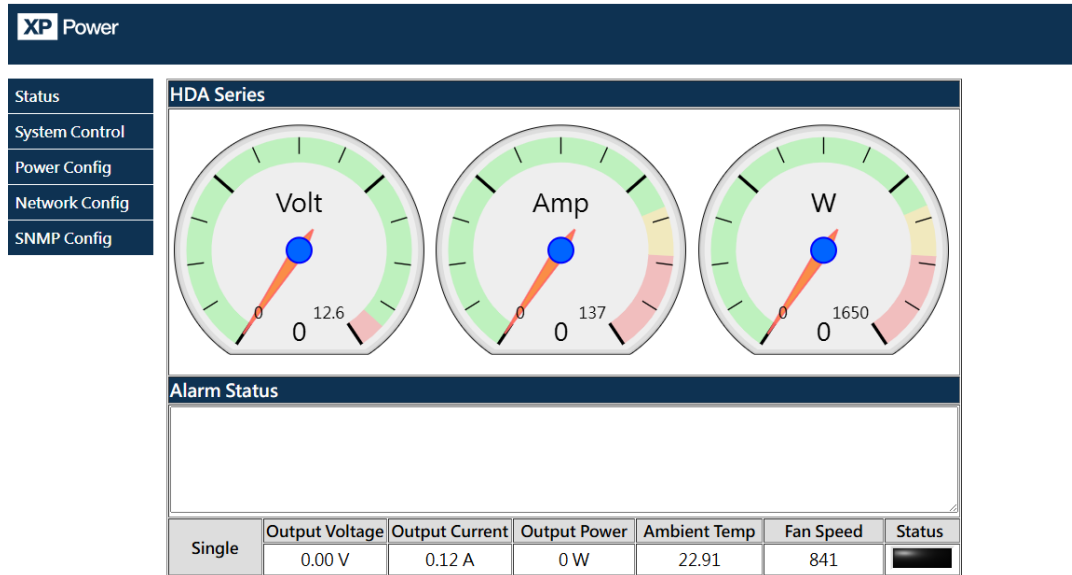


- ▶ 9.0 To check the power supply or devices status, go to the “Status” page.
- ▶ 9.1 In Switch On mode, the status bar is orange.



XP Power HDA Ethernet Discoverer - revision 1.0

- ▶ 9.2 While in Switch Off mode, it is black.



- ▶ 10.0 The “SNMP Config” feature supports SNMPv2C version and it also provides a MIB file for reading parameters and enabling monitoring functionality via SNMP.

SNMP Community Configuration

Read/Write Community String configuration for SNMPv2c Agent.

Configure multiple community names if you want the SNMP agent to respond to the NMS/SNMP manager with different read and write community names.

Read Comm1 :

Read Comm2 :

Write Comm1:

Write Comm2:

For more info needed regarding SNMP or 3rd party Ethernet tool for integration, please check with XP Power.

