

Screened HV cable

The standard combination of cable and connector can be found in the device datasheets under 'Models & ratings'.

HRG58

Technical data	
Maximum current	10A/DC
Impedance	50Ω
Maximum ambient temperature	+105°C
Bend radius (once)	37mm
Outer diameter	4.95mm
Max. cable operating voltage	Typical connectors
20kV	SHV 10

130 660

Technical data	
Maximum current	6A/DC
Impedance	55Ω
Maximum ambient temperature	+90°C
Bend radius (once)	27mm
Outer diameter	5.4mm
Max. cable operating voltage	Typical connectors
30kV	F 3415 HS 21 HS40

RG 11

Technical data	
Maximum current	6A/DC
Impedance	75Ω
Maximum ambient temperature	+80°C
Bend radius (once)	50mm
Outer diameter	10.3mm
Max. cable operating voltage	Typical connectors
50kV	F 3430 KS 150

C 2032 SVJ

Technical data	
Maximum current	12A/DC
Impedance	44Ω
Maximum ambient temperature	+200°C
Bend radius (once)	25mm
Outer diameter	11.94mm
Max. cable operating voltage	Typical connectors
50kV	KS150

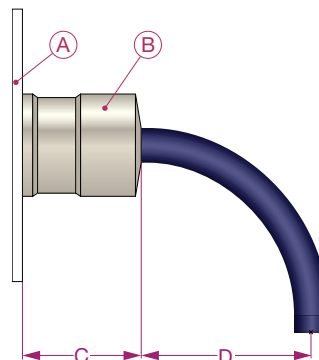
C 2124

Technical data	
Maximum current	12A/DC
Impedance	61Ω
Maximum ambient temperature	+60°C
Bend radius (once)	150mm
Outer diameter	11.2mm
Max. cable operating voltage	Typical connectors
100kV	KS 160 B100KTOI

C 2121

Technical data	
Maximum current	15A/DC
Impedance	51Ω
Maximum ambient temperature	+60°C
Bend radius (once)	216mm
Outer diameter	15.9mm
Max. cable operating voltage	Typical connectors
150kV	B150KTOI

Key	
A	Unit rear panel
B	Connector
C	Connector body length
D	Bend radius

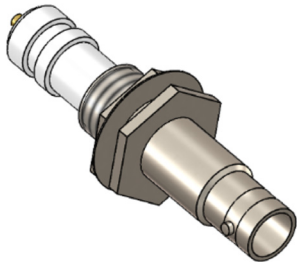


Connectors

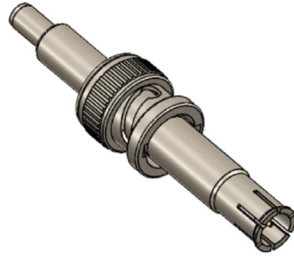
The standard combination of cable and connector can be found in the device datasheets under 'Models & ratings'.

SHV 10

Socket



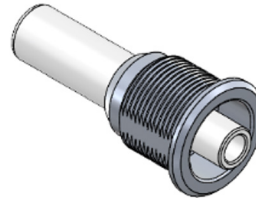
Connector



Maximum output values	
Voltage	10kV
Current	9A (DC)
Connector body length	37mm

RA 3415 - F 3415

Socket



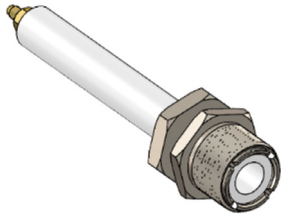
Connector



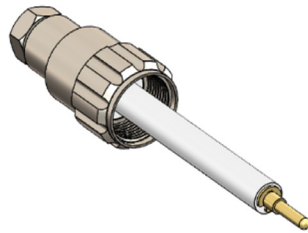
Maximum output values	
Voltage	12.5kV
Current	8A (DC)
Connector body length	50mm

HB 21 - HS 21

Socket



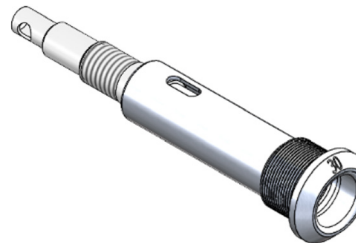
Connector



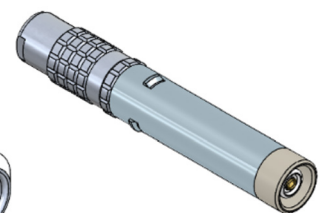
Maximum output values	
Voltage	20kV
Current	30A (DC)
Connector body length	46mm

RA 3430 - F 3430

Socket



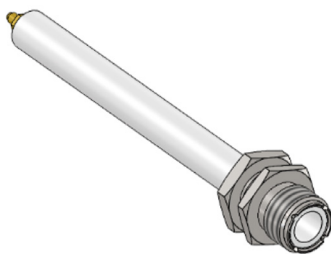
Connector



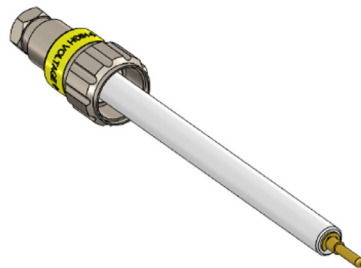
Maximum output values	
Voltage	35kV
Current	15A (DC)
Connector body length	42mm

HB 41 - HS 40

Socket



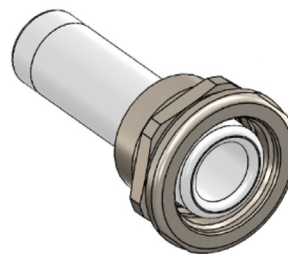
Connector



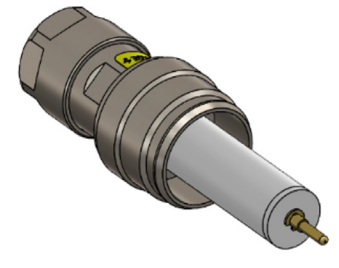
Maximum output values	
Voltage	40kV
Current	30A (DC)
Connector body length	45mm

GB 150 - KS 150

Socket



Connector



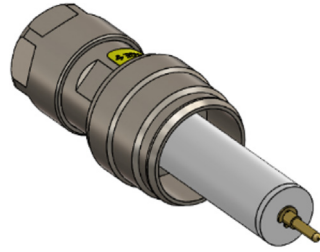
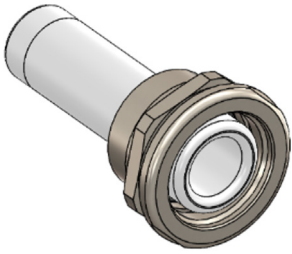
Maximum output values	
Voltage	50kV
Current	30A (DC)
Connector body length	55mm

HV output cable & connectors

GB 155 - KS 155

Socket

Connector

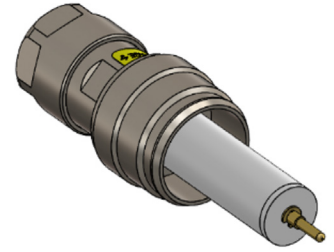
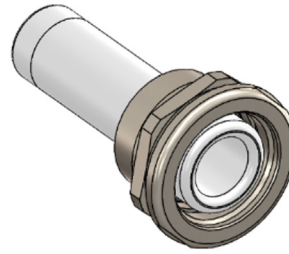


Maximum output values	
Voltage	50kV
Current	80A (DC)
Connector body length	55mm

GB 160 - KS 160

Socket

Connector

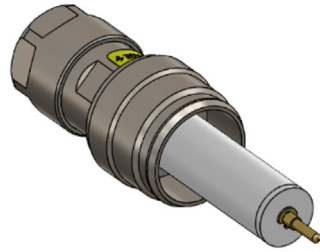
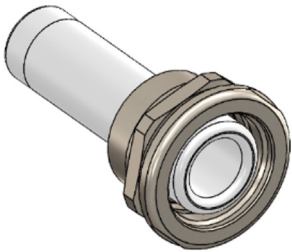


Maximum output values	
Voltage	65kV
Current	30A (DC)
Connector body length	55mm

GB 180 - KS 180

Socket

Connector

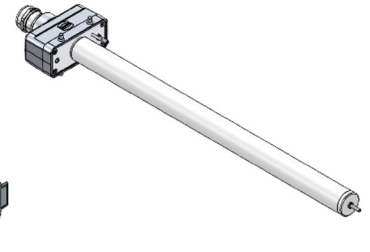
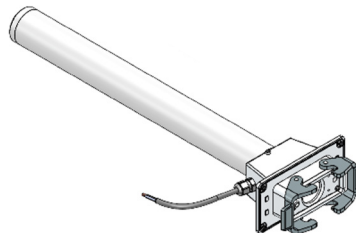


Maximum output values	
Voltage	80kV
Current	30A (DC)
Connector body length	55mm

B100KTOI⁽¹⁾

Socket

Connector

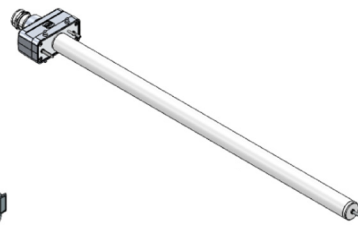
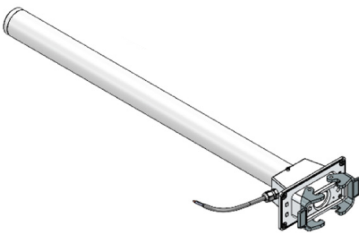


Maximum output values	
Voltage	100kV
Current	12A (DC)
Connector body length	117mm

B150KTOI⁽¹⁾

Socket

Connector



Maximum output values	
Voltage	150kV
Current	15A (DC)
Connector body length	117mm

Notes:

1. An interlock connection is included for the B100KTOI and B150KTOI.