



America

# CERTIFICATE

No. B 16 11 57396 462

Holder of Certificate: **XP Power LLC.**



15641 Red Hill Avenue, Suite 100  
Tustin CA 92780  
USA

Production  
Facility(ies):

61661, 77041

Certification Mark:



Product:

**Power supply**

Model(s):

**VCE05USxx**  
(where xx can be number 03 to 48 designating output voltage, may also be optional provided with suffix "-P" for open frame type)

Parameters:

Rated Input Voltage:	100-240 VAC
Rated Input Current:	0.2 A
Rated input frequency:	50-60 Hz
Elevation for use:	0-3048 m above sea level
Protection Class:	Class I or Class II at end use
Maximum Temperature, ambient:	50°C with 100% rated output power 70°C with 50% rated output power

See attachment for output ratings  
and Conditions of Acceptability.

Tested according to: EN 60950-1:2006/A2:2013

The product was tested on a voluntary basis and complies with the essential requirements. The certification mark shown above can be affixed on the product. It is not permitted to alter the certification mark in any way. In addition the certification holder must not transfer the certificate to third parties. See also notes overleaf.

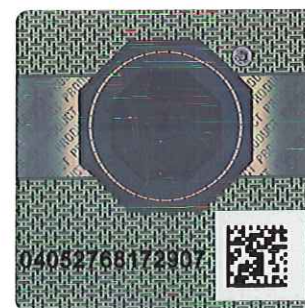
Test report no.: 095-72121438-000

Valid until: 2019-06-20

Date, 2016-12-02

Page 1 of 2

*William A. Wentholt*





America

# ATTACHMENT TO CERTIFICATE NO. B 16 11 57396 462 FOR XP POWER LLC

## POWER SUPPLY

### General Product information:

Models covered in this report are component type power supplies intended for use in IT equipment. They are open frame or with enclosure power supplies intended for building-in Class I or Class II end product.

### Approved models and Rated Outputs:

Model Number	OUTPUT RATING		
	Voltage (Vdc )	Max Current (A)	Max Output power (W)
VCE05US03	3.3 (2.95-3.65)	1.21	5
VCE05US05	5 (4.5-5.5)	1	5
VCE05US09	9 (8.1-10)	0.55	5
VCE05US12	12 (10.1-13.5)	0.41	5
VCE05US15	15 (13.5-17)	0.33	5
VCE05US18	18 (17.1-21)	0.277	5
VCE05US24	24 (21.1-26)	0.21	5
VCE05US28	28 (26.1-31)	0.178	5
VCE05US36	36 (33.1-42)	0.138	5
VCE05US48	48 (42.1-52)	0.104	5

### Conditions of Acceptability:

When installing the equipment, all requirements of the standards and the manufacturer's specifications must be met.

The models require:

- A suitable electrical and fire enclosure must be provided in the end use equipment.
- Proper earthing at end product is requirement when installed in the Class I end product.
- The following input terminals/connectors must be connected to the end-product supply neutral: CAN.
- When installed in end product, the clearance and creepage distance between the hazardous parts and accessible parts shall meet the standard(s) requirements. Hi-pot test, touch current test and ground bond test shall be conducted at end product.