



America

# CERTIFICATE

No. B 18 05 57396 503

**Holder of Certificate:** XP Power LLC.



15641 Red Hill Avenue, Suite 100  
Tustin CA 92780  
USA

**Production Facility(ies):**

59061, 59319, 71712, 89850

**Certification Mark:**



**Product:** Power supply

**Model(s):** HPT5K0TSxxx Series  
(where x can be 0 to 9 representing rated output voltage)

**Parameters:**

Rated Input:	200-480 VAC, 3-Phase (3W+PE)
Rated Current:	10 A Max Per Phase
Rated input frequency:	50/60 Hz
DC Output Ratings:	See attachment for output ratings
Elevation for use:	0-5000 m above sea level
Protection Class:	Class I at end use
Maximum temperature, ambient:	50°C with 100% of rated output 70°C with 50% of rated output.

**Tested according to:** EN 62368-1:2014

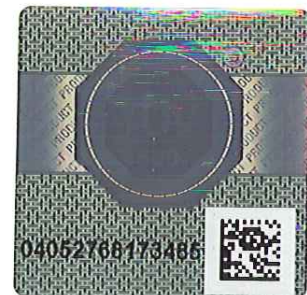
The product was tested on a voluntary basis and complies with the essential requirements. The certification mark shown above can be affixed on the product. It is not permitted to alter the certification mark in any way. In addition the certification holder must not transfer the certificate to third parties. See also notes overleaf.

**Test report no.:** 095-72137683-000

**Valid until:** 2023-05-23

**Date,** 2018-05-24

Page 1 of 2





America

## ATTACHMENT TO CERTIFICATE NO. B 18 05 57396 503 FOR XP POWER LLC

### POWER SUPPLY

#### General Product information:

The equipment is a 3-Phase (3W+PE) AC to DC isolating power supply for building-in. The power supply with up to a 5000 Watt rated output is provided with a metal enclosure housing and several PWBs with various critical components intended for use in Information Technology Equipment. The main outputs are considered ES3 and PS3 circuits. The 5Vsb auxiliary output is an isolated output for control and monitoring of the equipment's operation and is considered a ES1 and PS1 circuit.

#### Rated Outputs:

Model Number	Voltage (VDC )	OUTPUT RATING			
		200-240 V ac input range		380-480 Vac input range	
		Max Current (A)	Max Power (W)	Max Current (A)	Max Power (W)
HPT5K0TS060	0-60	50	3000	83.33	5000
HPT5K0TS100	0-100	30	3000	50	5000
HPT5K0TS200	0-200	15	3000	25	5000

All models are provided with an isolated 5Vdc/1 A stand-by output. De-rated by percentage same as conditions noted above for main output.

#### Conditions of Acceptability:

When installing the equipment, all requirements of the standards and the manufacturer's specifications must be met.

#### The models require:

- A suitable electrical and fire enclosure must be provided in the end use equipment.
- Proper bonding to the end-product main protective earthing terminal is required when the power supply is installed in the end product.
- When installed in end product, the clearance and creepage distance between the hazardous voltage circuitry and accessible parts shall meet the standard(s) requirements. Hi-pot test, touch current test and ground bond test shall be conducted at end use.
- The fan provided in this sub-assembly is provided with a fan guard that is integral to the chassis to reduce the risk of operator contact with the stator, additional accessibility shall be evaluated at the end use.
- These component power supplies employ VDRs connected to ground in series with a GDT. The GDT was not evaluated for basic insulation. They are to be installed within an end-product which will be installed within a rack system. Permanent connection to earth is guaranteed by means of the overall rack configuration and the Pluggable Type B power distribution unit (PDU) which powers the individual sub-components within the rack.