



America

CERTIFICATE

No. B 18 03 57396 490

Holder of Certificate: **XP Power LLC.**



15641 Red Hill Avenue, Suite 100
Tustin CA 92780
USA

Production
Facility(ies):

59061, 59319, 71712, 89850

Certification Mark:



Product:

Power supply

Model(s):

CMP250PSxx-yy
(where xx is 24-48, yy can be "SF" or blank,
may also be provided with additional suffixes
"-C", and "-S", all "-" is optional)

Parameters:

Rated Input Voltage:	100-240 VAC
Rated Input Current:	3.8 A
Rated input frequency:	50/60 Hz
Elevation for use:	0-5000 m above sea level
Protection Class:	Class I or Class II at end use
Maximum temperature, ambient:	
	50°C with 100% of rated output, convection cooling
	70°C with 50% of rated output, convection cooling

See attachment for model nomenclature, output ratings
and Conditions of Acceptability.

Tested according to: EN 62368-1:2014

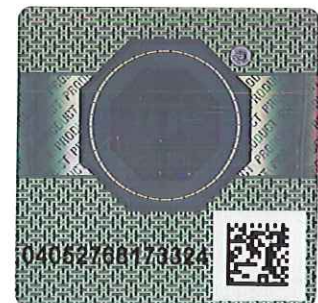
The product was tested on a voluntary basis and complies with the essential requirements. The certification mark shown above can be affixed on the product. It is not permitted to alter the certification mark in any way. In addition the certification holder must not transfer the certificate to third parties. See also notes overleaf.

Test report no.: 095-72134150-000

Valid until: 2023-03-12

Date, 2018-03-23

Page 1 of 2





America

ATTACHMENT TO CERTIFICATE NO. B 18 03 57396 490 FOR XP POWER LLC

POWER SUPPLY

General Product information:

The models are component AC/DC power supplies intended for use in Information Technology Equipment. Open frame switching power supplies intended for building-in.

Approved models and Rated Outputs:

Model Number	OUTPUT RATING			
			Convection cooling, or forced air cooling or forced air cooling with cover	convection cooling with cover
	Voltage (VDC)	Max Current (A)	Max Power (W)	Max Power (W)
CMP250PS24-yy	21.1-26	10.4	250	206
CMP250PS28-yy	26.1-31	9.0	250	206
CMP250PS33-yy	31.1-33	7.6	250	206
CMP250PS36-yy	33.1-42	6.9	250	206
CMP250PS48-yy	42.1-54	5.2	250	206

All models may be provided with 5Vdc, 1.5 A max stand-by output. De-rated by percentage same as conditions noted above for main output.

Model CMP250PSxx-yy has the following nomenclature where:

xx = 24-48, denotes the rated output voltage,

yy= SF or blank, denote either single pole fusing (SF) or double fusing (Blank),

Units provided with additional suffix "-C" provided with Cover,

Units provided with additional suffix "-S" indicates models provided with input screw terminals.

Conditions of Acceptability:

When installing the equipment, all requirements of the standards and the manufacturer's specifications must be met.

The models require:

- A suitable electrical and fire enclosure must be provided in the end use equipment.
- Heatsinks are floating and considered live. They should not be accessible in the end-product.
- Proper bonding to the end-product main protective earthing terminal is required when the power supply is installed in the Class I end product.
- When installed in end product, the clearance and creepage distance between the hazardous voltage circuitry and accessible parts shall meet the standard(s) requirements. Hi-pot test, touch current test and ground bond test (for Class I end product) shall be conducted at end use.
- The maximum continuous power supply output (Watts) relied on forced air cooling from: 12.5 CFM Fan applied to product 2 inches from input side with airflow directed inward.
- When installed in end product, the clearance and creepage distance between the related circuitry of the power supply and accessible parts shall meet the standard(s) requirements. Hi-pot test, touch current test and ground bond test shall be conducted at end product.
- The equipment is provided with a fuse in both the Line and Neutral of the primary circuit. The need for a marking warning service person of the hazards associated with neutral fusing shall be considered in the end-product.