



America

# CERTIFICATE

No. B 15 10 57396 360

Holder of Certificate: XP Power LLC.



15641 Red Hill Avenue, Suite 100  
Tustin CA 92780  
USA

Production  
Facility(ies):

71712, 89850

Certification Mark:



Product:

Power supply

Model(s):

ALM65USxxyy-zzv  
(where xx is any number between 12-48 designating output voltage and yy can be blank or "C2" designating Class II configuration, and -zz can be blank or "-A", "-6", "-6A", "-8", "-8A" designating AC inlet type, and v can be any alphanumeric or blank designating casing color)

Parameters:

Rated Input Voltage:	100-240 V AC
Rated Frequency:	50/60 Hz
Rated Input Current:	1.4 A
Rated output:	See attachment for output information
Protection Class:	Class I or Class II, depend on models
Temperature, Ambient:	40°C at full load; 60°C at 60% full load
Elevation for use:	0-5000 m

See attachment for conditions of acceptability

Tested according to: EN 60950-1:2006/A2:2013

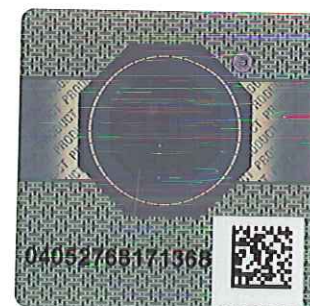
The product was tested on a voluntary basis and complies with the essential requirements. The certification mark shown above can be affixed on the product. It is not permitted to alter the certification mark in any way. In addition the certification holder must not transfer the certificate to third parties. See also notes overleaf.

Test report no.: 095-72108476-000

Valid until: 2019-06-20

Date, 2015-10-19

Page 1 of 2





America

## ATTACHMENT TO CERTIFICATE NO. B 15 10 57396 360 FOR XP POWER LLC

### POWER SUPPLY

#### Approved models and rated output:

Model Number	OUTPUT RATING		
	Voltage (VDC )	Maximum Current (A)	Max. output Power (W)
ALM65US12	12 (10.1-13.5)	5.4	65
ALM65US15	15 (13.5-17.0)	4.3	65
ALM65US19	19 (17.1-21.0)	3.4	65
ALM65US24	24 (21.0-26.0)	2.7	65
ALM65US48	48 (42.1-54.0)	1.35	65

Output voltage rating indicated in '( )' represents voltage tolerance range.

#### Model differences:

Models may have an additional yy identifier which can be blank or "C2" to designate a Class II configuration.

Models may have an additional zz identifier which can be blank or "A", "6", "6A", "8", "8A" to designate the type of input connector:

Blank designates a C14 input connector (Class I construction) or C18 input connector (Class II construction);

"-A" designates a C14 input connector with optional IEC cable retention(Class I construction);

"-6" designates a C6 input connector (Class I construction);

"-6A" designates a C6 input connector with optional IEC cable retention (Class I construction);

"-8" designates a C8 input connector (Class II construction);

"-8A" designates a C8 input connector with optional IEC cable retention (Class II construction).

#### Conditions of Acceptability:

- The following circuit locations (with circuit/schematic designation) were investigated as a limited power source (LPS): 12V output, 15V output, 19V output, 24V output, 48V output.
- The equipment employs Functional Earthing per 2.6.2. As anticipated by the NOTE for 1.2.4, it does not conform to one of the common Classes (I, II, or III). The following insulation is provided between the primary and accessible dead metal parts and circuits: Double/Reinforced.