



America

# CERTIFICATE

No. B 15 11 57396 367

**Holder of Certificate:** XP Power LLC.



15641 Red Hill Avenue, Suite 100  
Tustin CA 92780  
USA

**Production Facility(ies):**

77041, 61661

**Certification Mark:**



**Product:**

Power supplies

**Model(s):**

ECL05USxx-y, ECL10USxx-y  
(where xx = 03, 05, 09, 12, 15, 24 or 48 for output voltage, y = E, P or T for different connector and enclosure configurations).

**Parameters:**

Rated Input Voltage:	100-240 VAC
Rated Input Current:	0.4 A
Rated Input Frequency:	50-60 Hz
Protection Class:	Class I or Class II at end use.
Temperature, Ambient:	ECL05USxx-y: 70°C with maximum output power ECL10USxx-y: 50°C with maximum output power, 70°C with half maximum output power.
Elevation for use:	0-3048 m above sea level.
See attachment for further information.	

**Tested according to:** EN 60950-1:2006/A2:2013

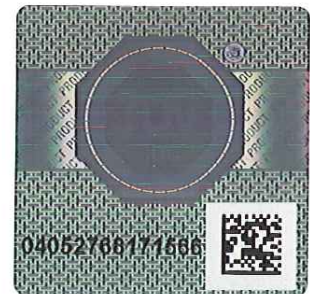
The product was tested on a voluntary basis and complies with the essential requirements. The certification mark shown above can be affixed on the product. It is not permitted to alter the certification mark in any way. In addition the certification holder must not transfer the certificate to third parties. See also notes overleaf.

**Test report no.:** 095-72111014-000

**Valid until:** 2019-06-20

**Date,** 2015-11-25

Page 1 of 2





America

## ATTACHMENT TO CERTIFICATE NO. B 15 11 57396 367 FOR XP POWER LLC

### POWER SUPPLY

#### Approved models and Rated Outputs:

Model Number	Output	
	Voltage (VDC )	Current (A)
ECL05US03	3.3	1.3
ECL05US05	5	1
ECL05US09	9	0.55
ECL05US12	12	0.415
ECL05US15	15	0.335
ECL05US24	24	0.21
ECL05US48	48	0.105
ECL10US03	3.3	2.6
ECL10US05	5	2
ECL10US09	9	1.1
ECL10US12	12	0.83
ECL10US15	15	0.67
ECL10US24	24	0.42
ECL10US48	48	0.21

#### Model No. suffix:

-P: PCB mount, open frame model, soldering pin input and output power connection.

-T: chassis mount, open frame model, terminal block for input and output connection.

-E: encapsulated, plastic enclosure, soldering pin input and output power connection.

#### Conditions of Acceptability:

When installing the equipment, all requirements of the standards and the manufacturer's specifications must be met.

#### The models require:

- A suitable electrical and fire enclosure must be provided in the end use equipment.
- If installed in Class I end product, proper bonding to the end-product main protective earthing terminal is required at end use.
- When installed in end product, the clearance and creepage distance between the related circuitry of the power supply and accessible parts shall meet the standard(s) requirements. Hi-pot test, touch current test and ground bond test (for class I end product) shall be conducted at end product.





America

# CERTIFICATE

No. B 15 11 57396 369

**Holder of Certificate:** XP Power LLC.



15641 Red Hill Avenue, Suite 100  
Tustin CA 92780  
USA

**Production Facility(ies):**

61661, 77041

**Certification Mark:**



**Product:**

Power supplies

**Model(s):**

ECL15USxx-y  
(xx=03, 05, 09, 12, 15, 24 or 48 for output voltage,  
y=E, P, T, S or SD for different connector and  
enclosure configurations)

**Parameters:**

Input, AC:	100-240 V, 50-60 Hz, 0.6 A
Protection Class:	Class I or Class II at end use
Temperature, Ambient:	50°C with maximum output power 70°C with half maximum output power
Elevation for use:	0-3048 m above sea level
Output, DC:	See attachment
See attachment for further information.	

**Tested according to:** EN 60950-1:2006/A2:2013

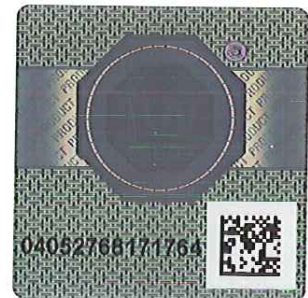
The product was tested on a voluntary basis and complies with the essential requirements. The certification mark shown above can be affixed on the product. It is not permitted to alter the certification mark in any way. In addition the certification holder must not transfer the certificate to third parties. See also notes overleaf.

**Test report no.:** 095-72111014101-000

**Valid until:** 2019-06-20

**Date,** 2015-12-17

Page 1 of 2





America

# ATTACHMENT TO CERTIFICATE NO. B 15 11 57396 369 FOR XP POWER LLC

## POWER SUPPLY

### APPROVED MODELS AND RATED OUTPUTS:

Model Number	Output	
	Voltage (VDC )	Current (A)
ECL15US03	3.3	3
ECL15US05	5	3
ECL15US09	9	1.67
ECL15US12	12	1.25
ECL15US15	15	1
ECL15US24	24	0.63
ECL15US48	48	0.32

### MODEL NO. SUFFIX:

- P: PCB mount, open frame model, soldering pin input and output power connection.
- T: chassis mount, open frame model, terminal block for input and output connection.
- E: encapsulated, plastic enclosure, soldering pin input and output power connection.
- S: encapsulated, plastic enclosure, screw terminal block for input and output connection.
- SD: DIN rail mounted, clip provided.

### CONDITIONS OF ACCEPTABILITY:

When installing the equipment, all requirements of the standards and the manufacturer's specifications must be met.

### The models require:

- A suitable electrical and fire enclosure must be provided in the end use equipment.
- If installed in Class I end product, proper bonding to the end-product main protective earthing terminal is required at end use.
- When installed in end product, the clearance and creepage distance between the related circuitry of the power supply and accessible parts shall meet the standard(s) requirements. Hi-pot test, touch current test and ground bond test (for class I end product) shall be conducted at end product.





America

# CERTIFICATE

No. B 16 01 57396 408

**Holder of Certificate:** XP Power LLC.



15641 Red Hill Avenue, Suite 100  
Tustin CA 92780  
USA

**Production Facility(ies):**

61661, 77041

**Certification Mark:**



**Product:** Power supply

**Model(s):** ECL15xyyy  
(where xx can UD or UT to indicate the dual or triple outputs, yy can be 01, 02 or 03 for different output combinations, can be optionally followed by P, T, E, S or SD for different mounting method or terminal type.)

**Parameters:**

Rated Input Voltage:	100-240 VAC
Rated Input Current:	0.3 A
Rated input frequency:	50/60 Hz
DC Output Ratings:	See attachment
Protection Class:	Class I or Class II at end use
Temperature, Ambient:	50°C with 100% rated output 70°C with 50% rated output
Elevation for use:	0-3048 m above sea level
See attachment for further information.	

**Tested according to:** EN 60950-1:2006/A2:2013

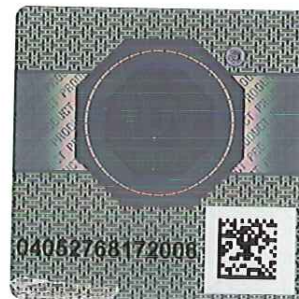
The product was tested on a voluntary basis and complies with the essential requirements. The certification mark shown above can be affixed on the product. It is not permitted to alter the certification mark in any way. In addition the certification holder must not transfer the certificate to third parties. See also notes overleaf.

**Test report no.:** 095-72110365106-000

**Valid until:** 2019-06-20

**Date,** 2016-01-19

Page 1 of 2





America

## ATTACHMENT TO CERTIFICATE NO. B 16 01 57396 408 FOR XP POWER LLC

### POWER SUPPLY

#### Approved models and Rated Outputs:

Model Number	OUTPUT 1		OUTPUT 2		OUTPUT 3	
	Voltage (VDC)	Current (A)	Voltage (VDC)	Current (A)		
ECL15UD01	12.0	0.65	-12.0	0.650	--	--
ECL15UD02	15.0	0.50	-15.0	0.500	--	--
ECL15UD03	5.0	1.50	12.0	0.625	--	--
ECL15UT02	5.0	2.00	12.0	0.200	-12.0	0.20
ECL15UT03	5.0	2.00	15.0	0.150	-15.0	0.15

#### Model No. suffix:

- P: PCB mount, open frame model, I/O pins
- T: PCB mount, open frame model, I/O connectors
- E: plastic enclosure with epoxy, I/O pins
- S: plastic enclosure with epoxy, I/O terminal blocks,
- SD: plastic enclosure with epoxy, I/O terminal blocks, DIN rail clip provided.

#### Conditions of Acceptability:

When installing the equipment, all requirements of the standards and the manufacturer's specifications must be met.

#### The models require:

- A suitable electrical and fire enclosure must be provided in the end use equipment.
- Proper bonding to the end-product main protective earthing terminal is required if installed in Class I end product.
- When installed in end product, the clearance and creepage distance between the hazardous circuit and accessible parts shall meet the standard(s) requirements. Hi-pot test, touch current test and ground bond test (Class I end product) shall be conducted at end product.





America

# CERTIFICATE

No. B 16 01 57396 407

Holder of Certificate: XP Power LLC.



15641 Red Hill Avenue, Suite 100  
Tustin CA 92780  
USA

Production  
Facility(ies):

77041, 61661

Certification Mark:



Product:

Power supply

Model(s):

ECL25US05-XB0232A, ECL25US24-XE0526, ECL25USxx-y  
(where xx can be number between 03 to 48  
designating the output voltage; y can be E, P,  
S, SD, T or blank, for different connector and  
enclosure configurations "-" provided optionally).

Parameters:

Rated Input: ECL25USxx-y, ECL25US05-XB0232A:  
100-240 VAC, 0.8 A, 50-60 Hz  
ECL25US24, ECL25US24-XE0526:  
100-240 VAC, 50-60 Hz, 0.8 A; or  
40-85 VDC, 0.8 A

DC Output Ratings: See attachment  
Protection Class: Class I or Class II at end use  
Temperature, Ambient:

ECL25USxx-y, ECL25US24-XE0526:  
50°C at 100% rated output  
70°C at 50% rated output  
ECL25US05-XB0232A:  
50°C at 100% rated output  
85°C at 50% rated output

Elevation for use: 0-3048 m above sea level  
See attachment for further information.

Tested according to: EN 60950-1:2006/A2:2013

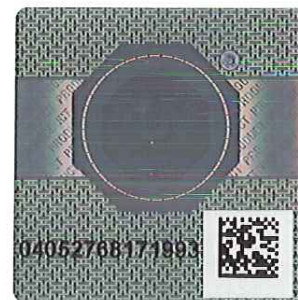
The product was tested on a voluntary basis and complies with the essential requirements. The certification mark shown above can be affixed on the product. It is not permitted to alter the certification mark in any way. In addition the certification holder must not transfer the certificate to third parties. See also notes overleaf.

Test report no.: 095-72110365108-000

Valid until: 2019-06-20

Date, 2016-01-19

Page 1 of 3





America

## ATTACHMENT TO CERTIFICATE NO. B 16 01 57396 407 FOR XP POWER LLC

### POWER SUPPLY

#### General Product information:

Models below are component type open frame or potted power supplies intended for use in IT equipment. They are power supplies intended for building-in.

#### Approved models and Rated Outputs:

Model Number	OUTPUT RATING	
	Voltage (VDC )	Current (A)
ECL25US03	3.3	6
ECL25US05, ECL25US05-XB0232A	5	5
ECL25US09	9	2.8
ECL25US12	12	2.1
ECL25US15	15	1.67
ECL25US24, ECL25US24-XE0526	24	1.04
ECL25US48	48	0.52
ECL25US24, ECL25US24-XE0526 (with DC input)	24	0.625

#### Model Differences:

Model ECL25US24-XE0526 is identical to ECL25US24, the different model No. is for marketing purpose.

Model ECL25USxx-T is similar to ECL25USxx-P except for ECL25USxx-T has I/O terminals and ECL25USxx-P has I/O pins.

Model ECL25USxx-T is similar to Model ECL25USxx-E except for ECL25USxx-E is housed in plastic enclosure with epoxy. xx can be 03 to 48 to represent the output voltage.

Secondary heat sink H1 provided on Models ECL25US03-Y, ECL25US05-Y, and ECL25US09-Y.

Model ECL25USxx-S is similar to Model ECL25USxx-E except for Model ECL25USxx-S with I/O terminal blocks, ECL25USxx-E with I/O pins, enclosure shape, PWB layout, and model designation.

Model ECL25USxx-SD is similar to Model ECL25USxx-S except for Model ECL25USxx-SD is provided with a DIN rail clip.

Model ECL25US05-XB0232A is similar to Model ECL25USxx-T except for Model ECL25US05-XB0232A is rated for 50% of rated output at 85°C ambient.



**ATTACHMENT TO CERTIFICATE NO. B 16 01 57396 407  
FOR XP POWER LLC**



America

**Conditions of Acceptability:**

**The models require:**

- A suitable electrical and fire enclosure must be provided in the end use equipment.
- When installed in end product, the clearance and creepage distance between the hazardous voltage circuitry and accessible parts shall meet the standard(s) requirements. Hi-pot test, touch current test and ground bond test (for Class I end product) shall be conducted at end use.
- Terminal block type ELK508 suitable for solid/stranded copper wiring only, 30-14 AWG, 4.5 lbs.-in. torque. Terminal block type ETB33 suitable for solid/stranded copper wiring only, 22-14 AWG, 3.48 lbs.-in. torque.
- For DC supplied models, the input shall be isolated from primary circuit by double or reinforced insulation.



America

# CERTIFICATE

No. B 16 01 57396 400

Holder of Certificate: **XP Power LLC.**



15641 Red Hill Avenue, Suite 100  
Tustin CA 92780  
USA

Production  
Facility(ies):

77041, 61661

Certification Mark:



Product:

Power supply

Model(s):

ECL30xxyy

(where xx can be UD or UT to indicate the dual or triple outputs, yy can be 01, 02 or 03 for different output combinations, can be optionally followed by P, T, E, S or SD for different mounting method or terminal type.)

Parameters:

Rated Input Voltage:	100-240 VAC
Rated Input Current:	0.8 A
Rated input frequency:	50/60 Hz
DC Output Ratings:	See attachment
Protection Class:	Class I or Class II at end use.
Temperature, Ambient:	50°C with maximum output power, 70°C with half maximum output power.
Elevation for use:	0-3048 m above sea level.
See attachment for further information.	

Tested according to: EN 60950-1:2006/A2:2013

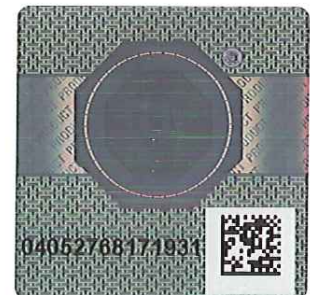
The product was tested on a voluntary basis and complies with the essential requirements. The certification mark shown above can be affixed on the product. It is not permitted to alter the certification mark in any way. In addition the certification holder must not transfer the certificate to third parties. See also notes overleaf.

Test report no.: 095-72110365109-000

Valid until: 2019-06-20

Date, 2016-01-14

Page 1 of 2







America

## ATTACHMENT TO CERTIFICATE NO. B 16 01 57396 400 FOR XP POWER LLC

### POWER SUPPLY

#### Approved models and Rated Outputs:

Model Number	Output 1		Output 2		Output 3		Output Power (W)
	Voltage (VDC )	Current (A)	Voltage (VDC )	Current (A)	Voltage (VDC )	Current (A)	
ECL30UD01	12	1.3	-12	1.3	--	--	30
ECL30UD02	15	1.0	-15	1.0	--	--	30
ECL30UD03	5	3.0	12	1.3	--	--	30
ECL30UT02	5	3.0	12	0.63	-12	0.63	30
ECL30UT03	5	3.0	15	0.5	-15	0.5	30

#### Model No. suffix:

- P: PCB mount, open frame model, I/O pins
- T: PCB mount, open frame model, I/O connectors
- E: plastic enclosure with epoxy, I/O pins
- S: plastic enclosure with epoxy, I/O terminal blocks,
- SD: plastic enclosure with epoxy, I/O terminal blocks, DIN rail clip provided.

#### Conditions of Acceptability:

When installing the equipment, all requirements of the standards and the manufacturer's specifications must be met.

#### The models require:

- A suitable electrical and fire enclosure must be provided in the end use equipment.
- Proper bonding to the end-product main protective earthing terminal is required if installed in Class I end product.
- When installed in end product, the clearance and creepage distance between the hazardous circuit and accessible parts shall meet the standard(s) requirements. Hi-pot test, touch current test and ground bond test (Class I end product) shall be conducted at end product.
- Terminal block type ELK508 series suitable for solid/stranded copper wiring only, 30-14 AWG, 4.5 lbs.-in. torque. Terminal block type ETB33 series suitable for solid/stranded copper wiring only, 22-14 AWG, 3.48 lbs.-in. torque.